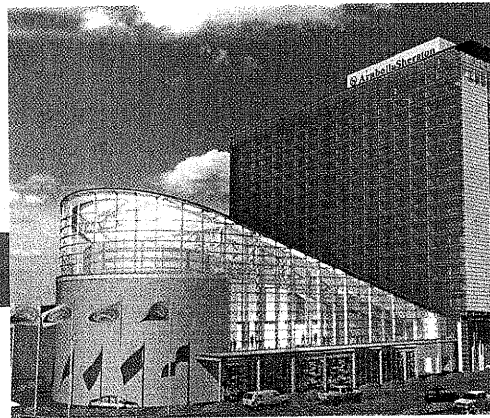


CAPE TOWN

FIFA HOTEL

**ARABELLA SHERATON GRAND HOTEL**

Hotel Group Sheraton  
 Address Granger Bay Court B,  
 Dockroad  
 Hotel Grade ★★★★★  
 Number of Rooms 483  
 World Cup Rooms 336



Proximity to km

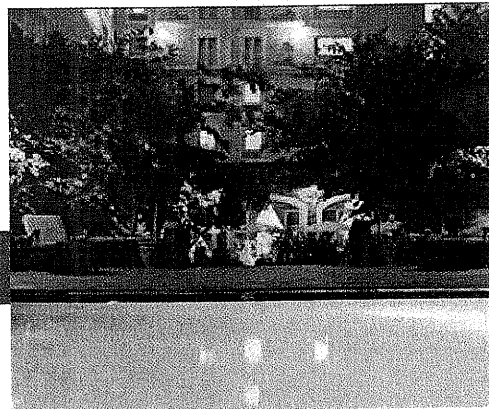
Newlands Stadium	9
Airport	17

CAPE TOWN

OFFICIAL HOTEL

**THE COMMODORE**

Hotel Group Legacy  
 Address Portwood Road, Portwood  
 Square, V and A Waterfront  
 Hotel Grade ★★★★★  
 Number of Rooms 236  
 World Cup Rooms 187



Proximity to km

Newlands Stadium	14
Airport	22

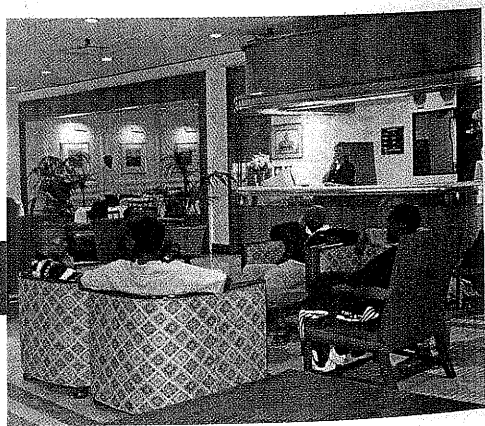
# FIFA and Official Hotels Bloemfontein

BLOEMFONTEIN

OFFICIAL HOTEL

## BLOEMFONTEIN CITY LODGE

Hotel Group	City Lodge
Address	Nelson Mandela Drive
Hotel Grade	***
Number of Rooms	152
World Cup Rooms	122



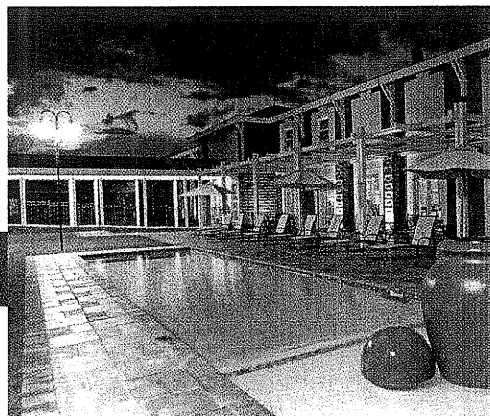
Proximity to	km
Free State Stadium	2
Airport	10

BLOEMFONTEIN

FIFA HOTEL

**BLOEMFONTEIN**

Hotel Group	Protea
Address	202 Nelson Mandela Drive Brandwag, Bloemfontein, 9301
Hotel Grade	****
Number of Rooms	92
World Cup Rooms	72



Proximity to km

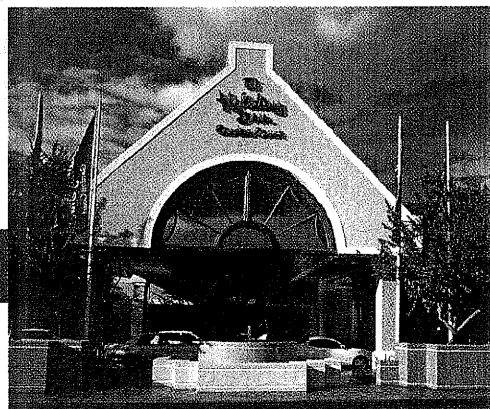
Free State Stadium	4
Airport	15

BLOEMFONTEIN

OFFICIAL HOTEL

**HOLIDAY INN GARDEN COURT BLOEMFONTEIN**

Hotel Group	Southern Sun
Address	Cnr Nelson Mandela and Melville Drive, Brandwag
Hotel Grade	***
Number of Rooms	147
World Cup Rooms	118



Proximity to km

Free State Stadium	2
Airport	10

# FIFA and Official Hotels Kimberley

KIMBERLEY

OFFICIAL HOTEL

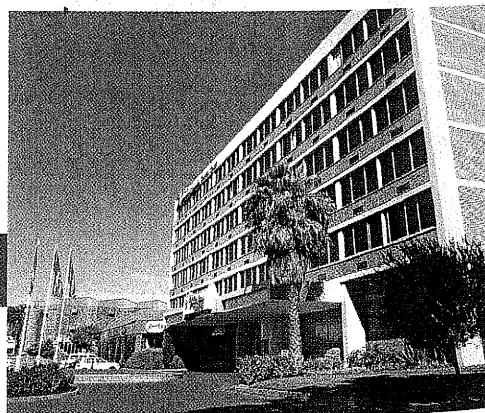
## HOLIDAY INN GARDEN COURT KIMBERLEY

Hotel Group Southern Sun  
Address Du Toitspan Road

Hotel Grade \*\*  
Number of Rooms 135  
World Cup Rooms 108

Proximity to km

Kimberley Stadium	10
Airport	7



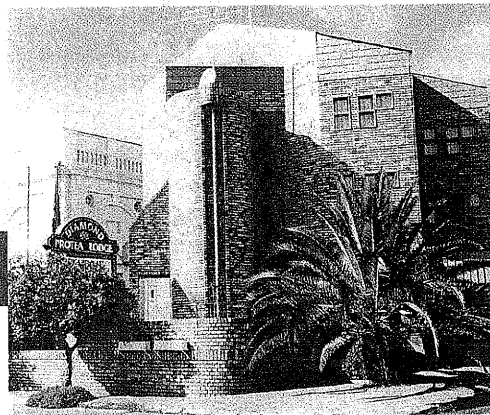
KIMBERLEY

FIFA HOTEL

**PROTEA HOTEL DIAMOND LODGE**

Hotel Group Protea  
 Address 124 Du Toitspan Road

Hotel Grade ★★  
 Number of Rooms 34  
 World Cup Rooms 26



Proximity to km

Kimberley Stadium	6
Airport	10

KIMBERLEY

OFFICIAL HOTEL

**SAVOY HOTEL**

Hotel Group Independent  
 Address 15 De Beers Road,  
 Kimberly

Hotel Grade ★★★  
 Number of Rooms 44  
 World Cup Rooms 32



Proximity to km

Kimberley Stadium	5
Airport	11

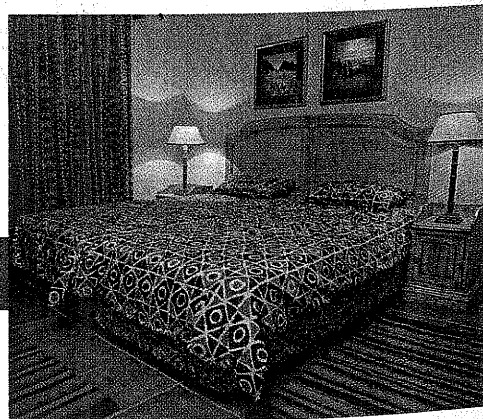
# FIFA and Official Hotels Nelspruit

NELSPRUIT

OFFICIAL HOTEL

## CASA DO SOL

Hotel Group	Three Cities
Address	Hazyview
Hotel Grade	★★★★
Number of Rooms	54
World Cup Rooms	39



Proximity to km

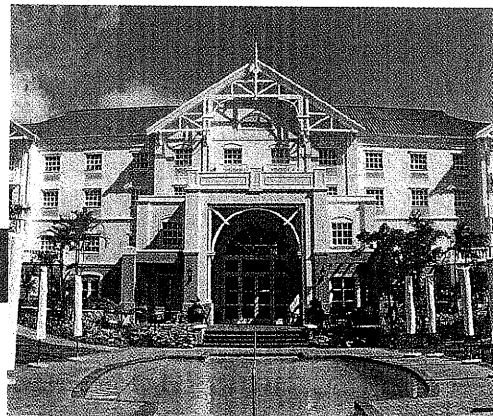
Mbombela Stadium	75
Airport	42

NELSPRUIT

FIFA HOTEL

**EMNOTWENI SUN**

Hotel Group Southern Sun  
 Address Government Boulevard,  
 Riverside Park Ext 1, Nelspruit  
 Hotel Grade ★★★★★  
 Number of Rooms 106  
 World Cup Rooms 87



Proximity to km

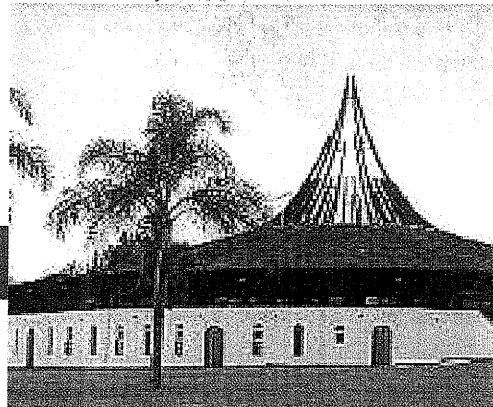
Mbombela Stadium	2
Airport	15

NELSPRUIT

OFFICIAL HOTEL

**HOTEL WINKLER**

Hotel Group Independent  
 Address R 538 Numbi Gate Road,  
 White River  
 Hotel Grade ★★★★★  
 Number of Rooms 87  
 World Cup Rooms 87



Proximity to km

Mbombela Stadium	21
Airport	14

# FIFA and Official Hotels Orkney

ORKNEY

OFFICIAL HOTEL

## GOLDEN PROTEA LODGE

Hotel Group	Protea
Address	Corner Barend & Margaretha Prinsloo Street, Klerksdorp
Hotel Grade	***
Number of Rooms	72
World Cup Rooms	58



Proximity to km

Oppenheimer Stadium	12
Closest Airport	5



ORKNEY

FIFA HOTEL

SUNNYSIDE PARK

Hotel Group  
Address  
  
Hotel Grade  
Number of Rooms  
World Cup Rooms

Legacy  
Prince of Wales Terrace  
Parktown  
★★★★  
104  
78



Proximity to km

Oppenheimer Stadium	110
Closest Airport	10

ORKNEY

OFFICIAL HOTEL

GOLF REEF CITY

Hotel Group  
Address  
  
Hotel Grade  
Number of Rooms  
World Cup Rooms

Protea  
Shaft 14  
Northern Parkway Ormonde  
★★★★  
74  
55



Proximity to km

Oppenheimer Stadium	110
Closest Airport	10

# FIFA and Official Hotels Polokwane

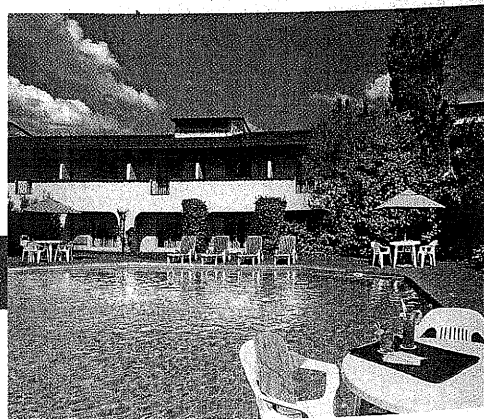
POLOKWANE

OFFICIAL HOTEL

## HOLIDAY INN GARDEN COURT POLOKWANE

Hotel Group Southern Sun  
Address Cnr Thabo Mbeki/  
President Paul Kruger Streets

Hotel Grade ☆☆☆  
Number of Rooms 179  
World Cup Rooms 143



Proximity to km

Peter Mokaba Stadium	3
Airport	5

# 12

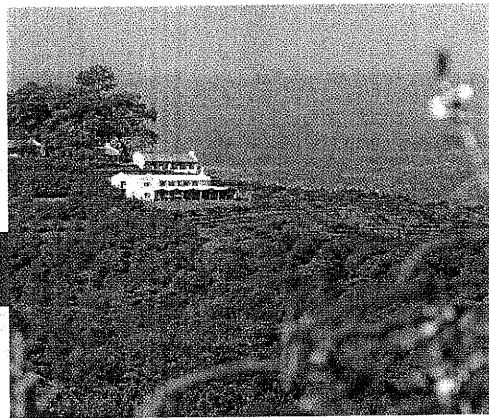
## Accommodation

### POLOKWANE

### FIFA HOTEL

#### COACH HOUSE HOTEL

Hotel Group	Independent
Address	Old Coach Road at Agatha, Tzaneen
Hotel Grade	★★★★
Number of Rooms	41
World Cup Rooms	32



#### Proximity to km

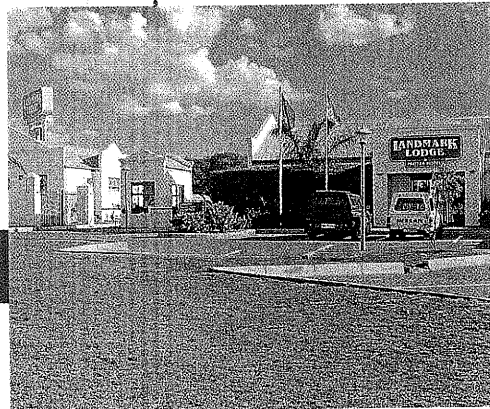
Peter Mokaba Stadium	72
Airport	70

### POLOKWANE

### OFFICIAL HOTEL

#### PROTEA HOTEL RANCH

Hotel Group	Protea
Address	25 km South of Polokwane on the N1 Highway Limpopo Province, 0700
Hotel Grade	★★★
Number of Rooms	84
World Cup Rooms	50



#### Proximity to km

Peter Mokaba Stadium	27
Airport	30

# FIFA and Official Hotels Port Elizabeth

PORT ELIZABETH

OFFICIAL HOTEL

## MARINE HOTEL

Hotel Group  
Address  
Hotel Grade  
Number of Rooms  
World Cup Rooms

Protea  
Marine Drive, Summerstrand,  
Port Elizabeth, 6001

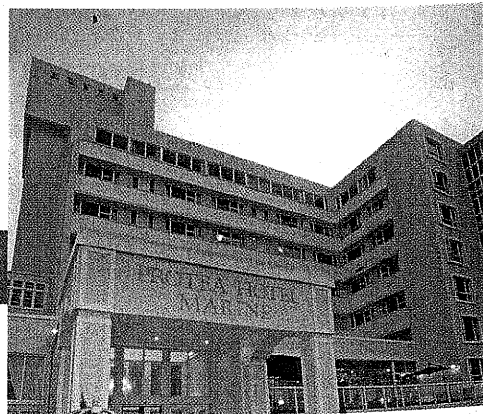
★★★★

98

75

Proximity to km

Port Elizabeth Stadium	28
Airport	8



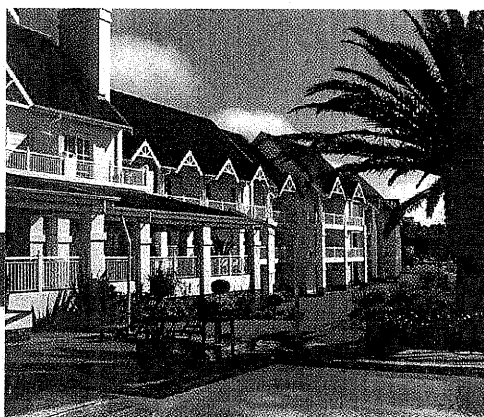
PORT ELIZABETH

FIFA HOTEL

**COURTYARD SUITE HOTEL**

Hotel Group  
Address  
Hotel Grade  
Number of Rooms  
World Cup Rooms

City Lodge  
Cnr. Lodge & Beach Road,  
Summerstrand  
\*\*\*\*\*  
64  
51



Proximity to km

Port Elizabeth Stadium	26
Airport	5

PORT ELIZABETH

OFFICIAL HOTEL

**HOLIDAY INN GARDEN COURT KINGS BEACH**

Hotel Group  
Address  
Hotel Grade  
Number of Rooms  
World Cup Rooms

Southern Sun  
La Roche Drive,  
Humewood  
\*\*\*  
280  
224



Proximity to km

Port Elizabeth Stadium	25
Airport	5

# FIFA and Official Hotels Pretoria

PRETORIA

OFFICIAL HOTEL

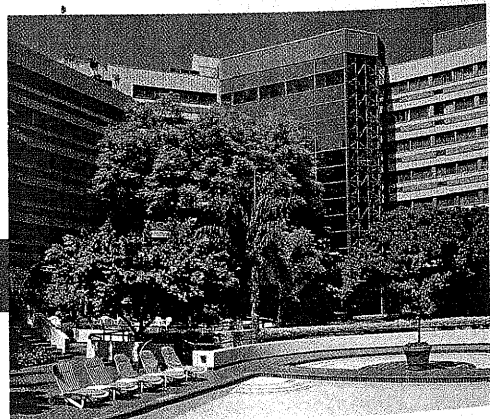
## HOLIDAY INN PRETORIA

Hotel Group Southern Sun  
Address Church Street

Hotel Grade \*\*\*  
Number of Rooms 242  
World Cup Rooms 194

Proximity to km

Loftus Versfeld Stadium	12
Rainbow Junction	25
Airport	45

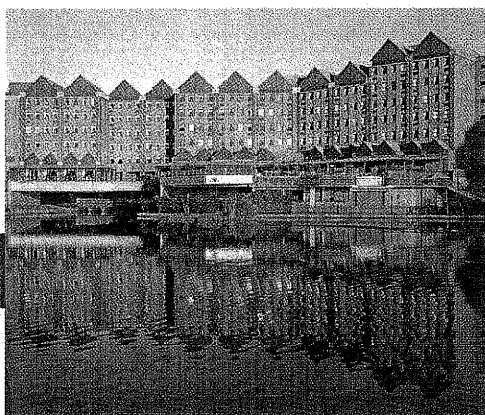


PRETORIA

FIFA HOTEL

**CENTURION LAKE HOTEL**

Hotel Group Legacy  
 Address Lenchen Avenue North,  
 Centurion  
 Hotel Grade \*\*\*\*  
 Number of Rooms 160  
 World Cup Rooms 127



Proximity to km

Loftus Versfeld Stadium	20
Rainbow Junction	10
Airport	45

PRETORIA

OFFICIAL HOTEL

**HOLIDAY INN GARDEN COURT HATFIELD**

Hotel Group Southern Sun  
 Address Cnr Pretorius and End Streets,  
 Hatfield, Pretoria  
 Hotel Grade \*\*\*  
 Number of Rooms 157  
 World Cup Rooms 126



Proximity to km

Loftus Versfeld Stadium	3
Rainbow Junction	20
Airport	45

# FIFA and Official Hotels Rustenburg

RUSTENBURG

OFFICIAL HOTEL

## CASCADES

Hotel Group  
Address

Sun International  
Sun City

Hotel Grade

★★★★★

Number of Rooms

243

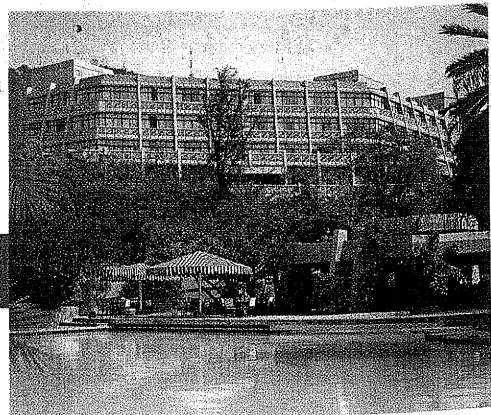
World Cup Rooms

193

Proximity to km

Royal Bafokeng  
Airport

50  
10





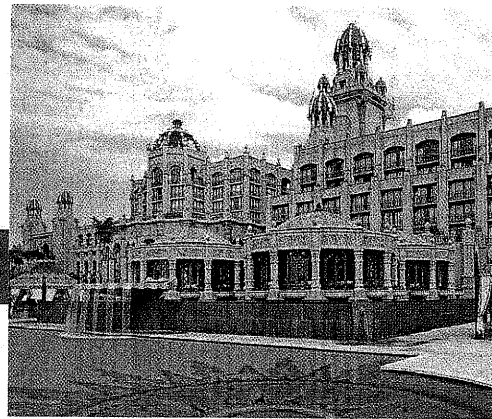
RUSTENBURG

FIFA HOTEL

**PALACE OF THE LOST CITY**

Hotel Group Sun International  
Address Sun City

Hotel Grade ★★★★★  
Number of Rooms 338  
World Cup Rooms 263



Proximity to km

Royal Bafokeng Airport	50 10
---------------------------	----------

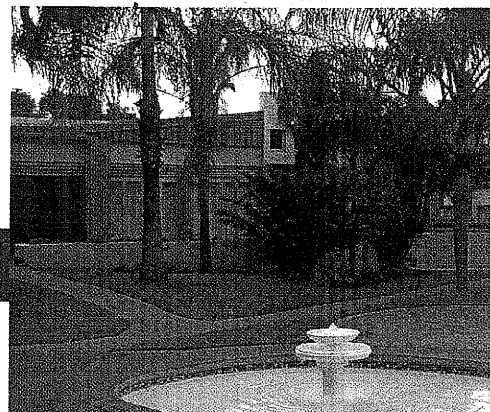
RUSTENBURG

OFFICIAL HOTEL

**SAFARI LODGE**

Hotel Group Orion  
Address Dorenhoeck Road

Hotel Grade ★★★  
Number of Rooms 123  
World Cup Rooms 98



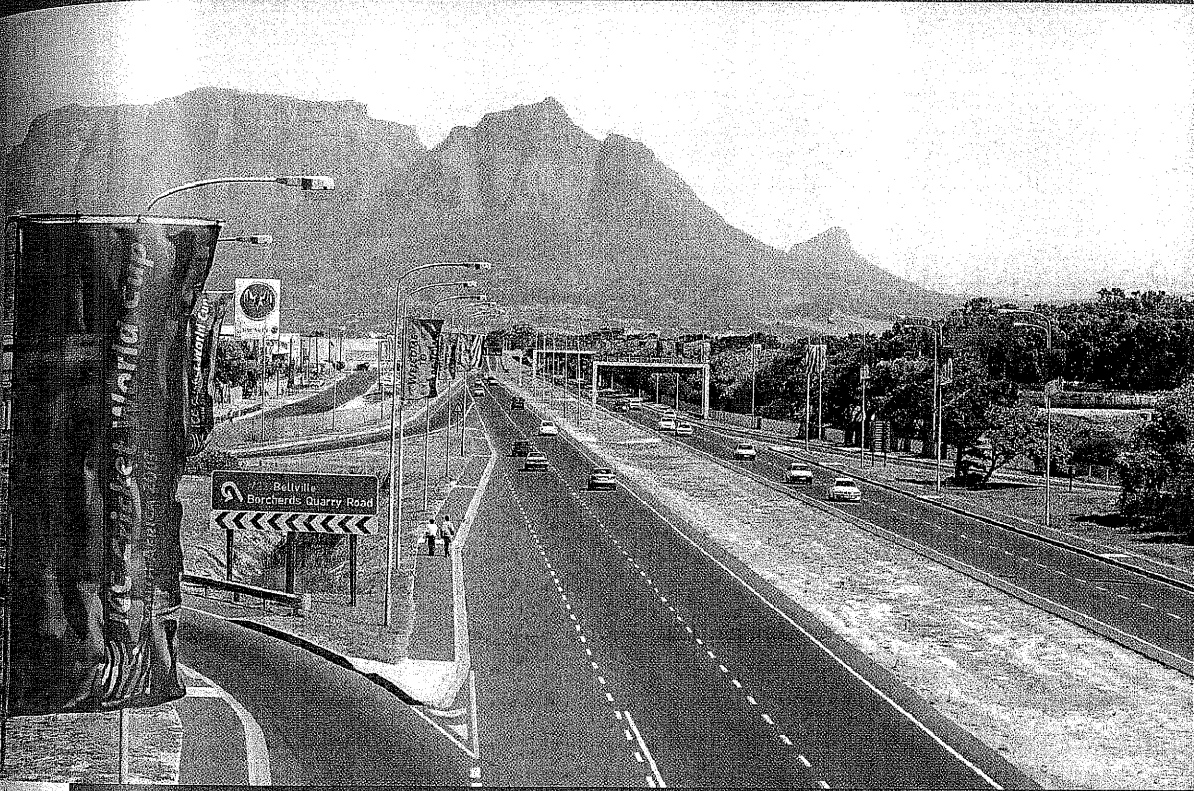
Proximity to km

Royal Bafokeng Airport	5 30
---------------------------	---------



# Transport

- 13.1 GENERAL
- 13.2 OFFICIAL VEHICLES
- 13.3 AIR TRANSPORT
- 13.4 TRANSPORT CONCEPT
- 13.5 COMPUTERISED MANAGEMENT SYSTEM



## 13.1 GENERAL

### 13.1.1 Travel South Africa

South Africa is one of the world's top tourist destinations, with over 6.4 million visitors in 2003 and a tourism growth rate that is three times greater than the world average. As a result, South Africa's transportation industry is rapidly expanding its efficiency and capacity to meet rising demand.

South Africa has a well-developed internal transportation network. Travel demand for the 2010 FIFA World Cup™ has been thoroughly reviewed to ensure that visitors can move around the country efficiently by road, air, rail and even sea.

### 13.1.2 Transport Networks

Frequent international air connections around the globe link directly to an extensive domestic airline network serving all the venue cities. Uncongested, world-class airports make air travel a pleasure.

National and local road networks are excellent, with effective transport management across the system. Traffic densities are lower than those of most industrialised countries, making road travel a comfortable, reliable and enjoyable way to see the wonders of the country.

Intercity passenger rail services span the country and are supplemented by luxury long distance services featuring the Blue Train and Rovos Rail. Most venue cities also have local rail systems serving the stadiums.

Strategically located on sea routes linking Europe, North and South America, and the Far East, South Africa's three major passenger ports are also main venues that can accommodate large passenger liners - a more leisurely way to travel.



### 13.1.3 Meeting the Growth in Transport Needs

All main airports have recently been upgraded and further work is continuing. A new high-speed rail link – linking Johannesburg International Airport with Johannesburg and Pretoria – is planned to be in operation for the World Cup in 2010.

These and many other projects demonstrate South Africa's commitment to transport infrastructure development and its ability to accommodate the staging of the 2010 FIFA World Cup™.

### 13.1.4 Successful Hosting of World Events

Through hosting of recent world events it has been proved that South African transport systems can successfully meet world class standards of delivery. Specific important lessons and expertise in mega-event transport management include:

- ◆ Forecasting and management of airport arrivals and departures for both international and domestic air passengers;
- ◆ Development and communication of transport management plans to spectators in respect of each stadium;
- ◆ Encouraging the use of public transport to and from the Stadiums;
- ◆ Implementation of event traffic management plans by metropolitan and local traffic police departments;
- ◆ Establishment of a multi-disciplinary transportation task force for each World Cup City;
- ◆ Priority transport route operations for FIFA Members, Officials and players to permit efficient transport between the hotels and the main event locations;
- ◆ By making use of spectator walking opportunities, important transport management benefits were achieved, in particular spreading the travel demand both spatially and temporally; and
- ◆ Establishing a legacy of volunteering in mega-event operations.

### 13.2

A high quality, reliable, efficient and safe transportation system will be provided for the specific needs of each category of the World Cup Family. FIFA's requirements for official vehicles will be fully met by the Organising Association.

#### 13.2.1 Transport Performance Standards

The World Cup Family transport will operate to the highest performance standards and will strive to achieve the following goals:

- ◆ Zero probability of failure of the transport system;
- ◆ Anticipate and plan for the effect of adverse weather and/or traffic conditions on travel times;
- ◆ Minimise travel time between place of accommodation and venue to less than 30 minutes;

- ◆ No player or team official should have to wait longer than five minutes for a dedicated luxury coach;
- ◆ No accredited media member should have to wait longer than 10 minutes for a scheduled bus service from accommodation to Media Centre / Broadcast Centre / Stadium.

#### 13.2.2 World Cup Family Vehicle Requirements

To meet the above performance criteria, the table on the next page gives a summary of the World Cup Family vehicle requirements.

#### 13.2.4 Members of FIFA, VIPS and FIFA officials

Transport will be of a luxury standard (with high security status), almost exclusively road based, but supplemented by private plane and helicopter when required. This group will travel via the World Cup priority road corridors to ensure the quickest possible travel times.



### World Cup Family Vehicle Requirements

	No. of persons	Private jets	Limousines	Cars	Coaches	Buses	Mini-buses	Luggage vans
FIFA Members & Officials	500	2	3	300	8	-	-	3
Players and Team Officials	1,600	-	-	70	35	-	35	35
Referees & Medical Officials	100	-	-	30	12	-	25	12
Media: Broadcast Media	8,000	-	-	-	20	50	50	-
Print Media	4,000	-	-	-	-	-	-	-
Sponsors & Suppliers	6,000	-	-	50	50	10	50	10
<b>TOTAL</b>		<b>2</b>	<b>3</b>	<b>450</b>	<b>125</b>	<b>60</b>	<b>160</b>	<b>60</b>

Police escorts will be provided and routing will be varied in accordance with security arrangements. Personal cars and chauffeurs will be provided for FIFA officials, as listed by FIFA.

Dedicated minibuses (8-10 seater vehicles) will be made available to the FIFA Officials. These vehicles will satisfy the required level of mobility between the FIFA Headquarters, the Main Media Centre, the accommodation centres and the Stadiums. When required for special occasions, larger coaches will be provided.

#### 13.2.5 Players and Team Officials

Dedicated transport from the hotels to the competition and training venues will be provided in terms of FIFA requirements. Routing to the stadiums will be in accordance with the security plans. The most appropriate transport will be provided for them and they will be given top priority when travelling.

#### 13.2.6 Referees and Medical Officials

A combination of coaches, minibuses and sedan vehicles will be provided to transport referees and medical officials around the major venue cities. A luggage van will also be included. Transport in the subsidiary venues and on match days will also be provided for this category.

#### 13.2.7

Although make t made t Media will for Broad match accom Media el to t the fr erent able betw

Medi



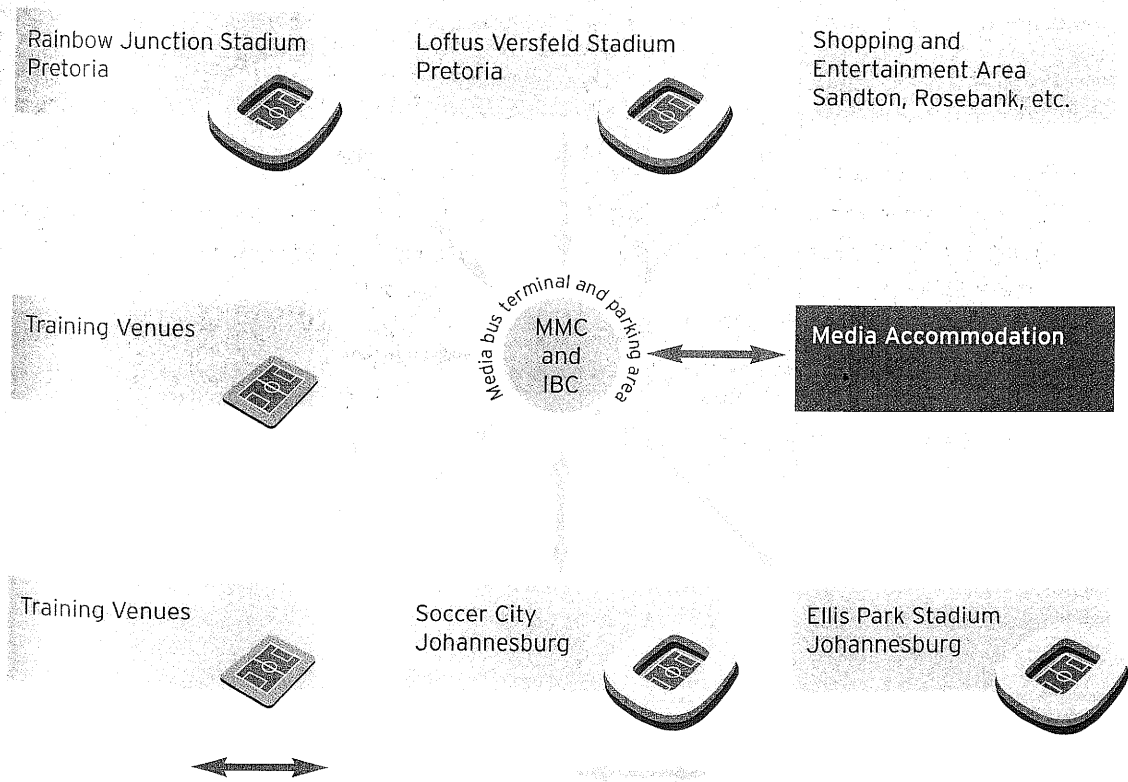
### 13.2.7 Media

Although it is expected that many Media personnel will make their own travel arrangements, provision will be made for an efficient, free shuttle bus system. The Media bus system in the Johannesburg/Pretoria area will focus on the Main Media Centre, the International Broadcasting Centre and Media accommodation on match days and non-match days. The Media will be accommodated in hotels in close proximity to the Main Media Centre to facilitate short travel times. For travel to the training venues, provision will be made for the free shuttle bus system. SAFA will negotiate preferential terms with public transport authorities tenable accredited Media representatives to travel between the various venue cities.

### 13.2.8 Sponsors and Suppliers

A portion of this group's transport needs (i.e. chief executives of the main sponsors) will be catered for as part of the FIFA members and VIPs group. Pool vehicles will be made available for the remaining persons in this group, totalling an estimated 6,000 in number, for their specific needs.

#### Media Bus System



24 hour scheduled bus service between media accommodation and MMC/IBC

Scheduled bus service to stadium on match/training days and MMC/IBC for media briefings etc.

World Region

Total number of flights  
per week, 2003  
(arrive and depart)

<b>Intercontinental</b>	<b>370</b>
Europe	250
Asia and Australia	66
North and South America	36
Middle East	18
<b>Other African</b>	<b>785</b>



### 13.3 AIR TRANSPORT

#### 13.3.1 International Connections

Currently over 30 international airline carriers provide South Africa with excellent intercontinental connections. South Africa is also the main hub of African air travel with almost 800 arrivals and departures weekly.

Air travel to South Africa is very convenient with many direct flights, particularly from European destinations with the added advantage of sharing the same time zone. 75% of FIFA's member countries are within 12 hours' flying time from South Africa.

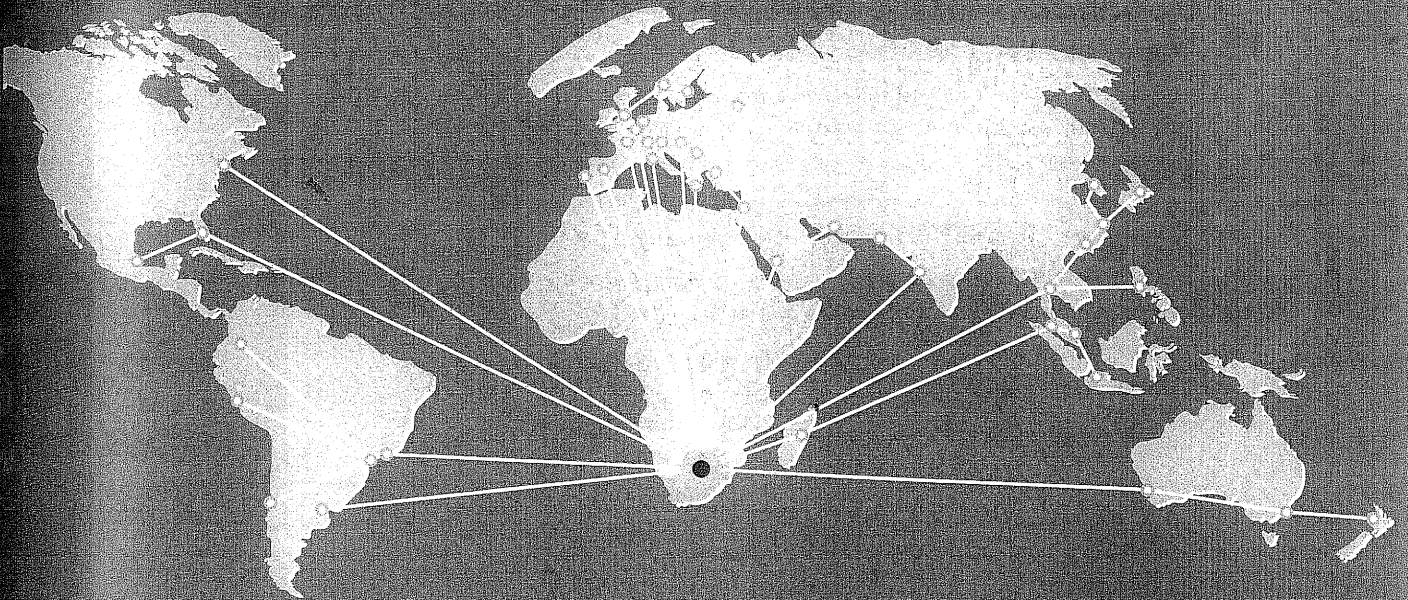
Recent figures from the Airports Company South Africa (ACSA) indicate that close to 3 million passengers move out of Johannesburg International Airport (JIA) and Cape Town International Airport (CTIA) on international flights alone per annum.



# 13

Transport

## International air links



### 13.3.2 Domestic air connections

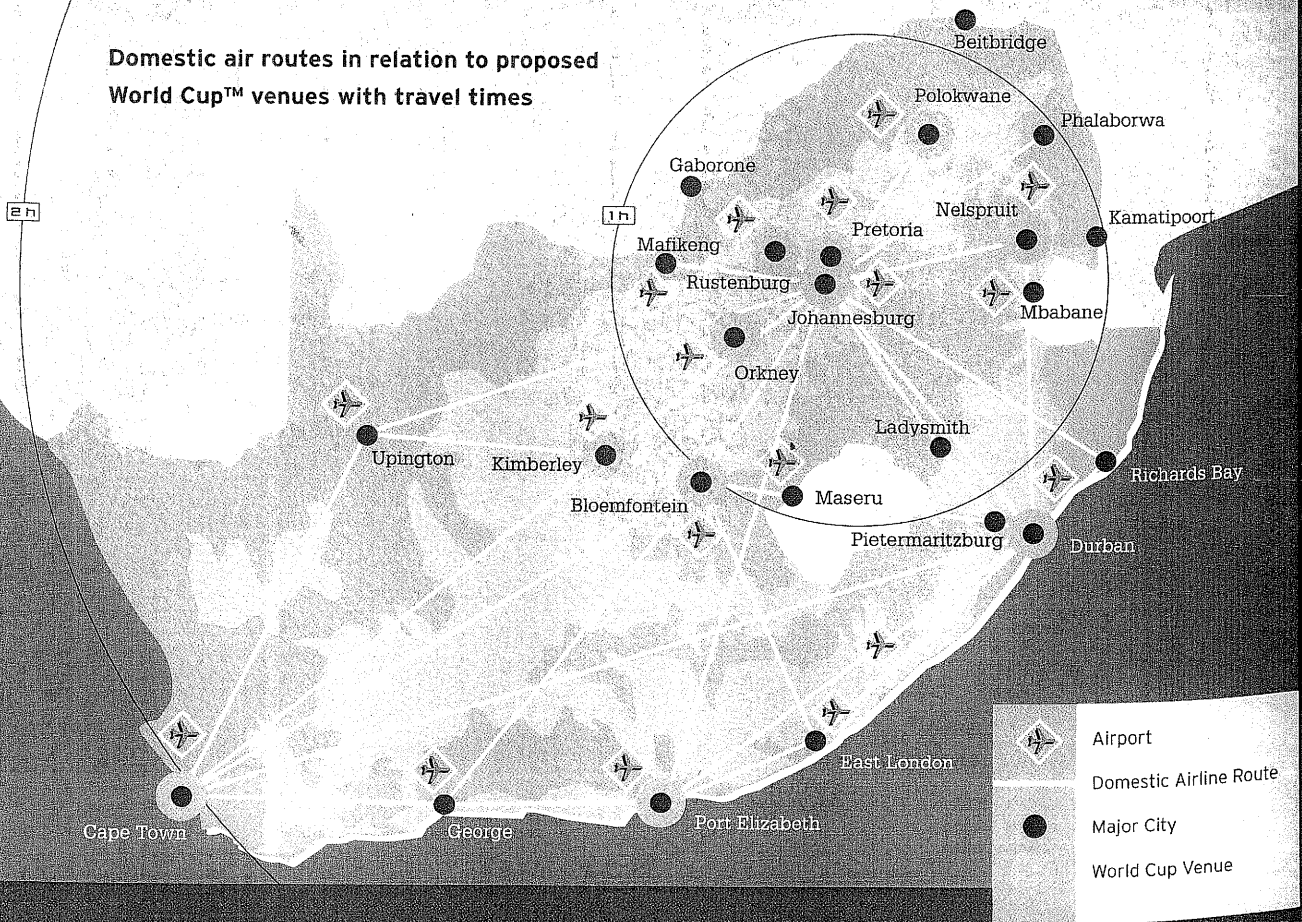
Johannesburg, Cape Town and Durban International Airports form important domestic hub airports for regional air travel within South Africa. These three airports are interlinked with regional airports that directly serve all the proposed 2010 FIFA World Cup™ venues.

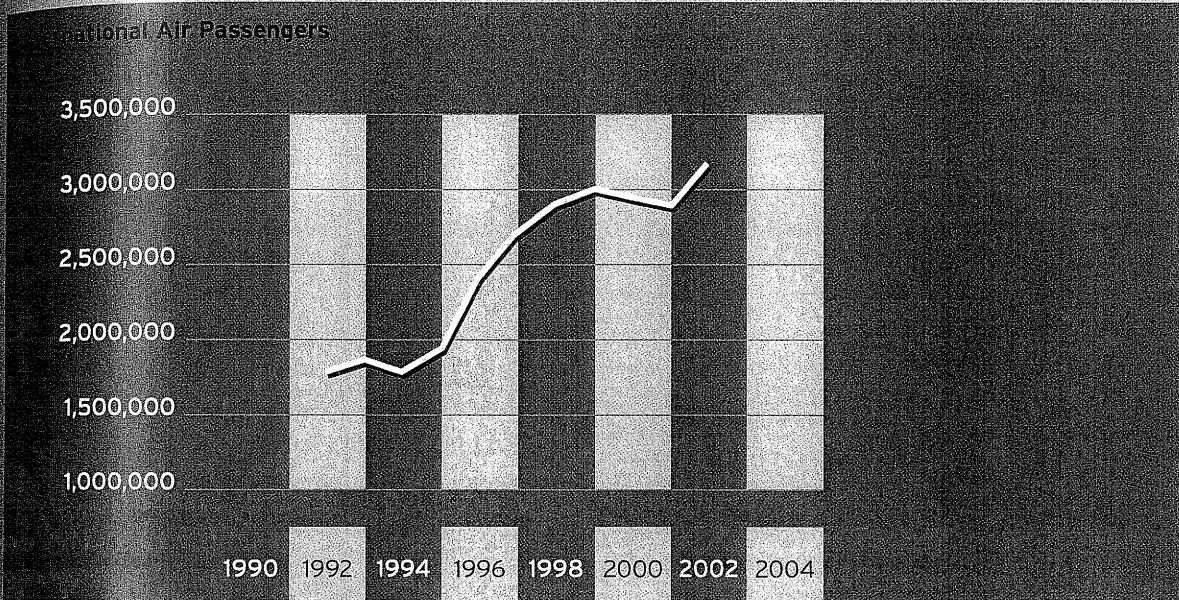
Recent figures put the flights between larger cities in South Africa at over 1,000 per week. World Cup Venues are well served by local daily flights, with all venues having an airport capable of handling regional air travellers. The localities directly linked by commercial domestic passenger flights and where World Cup™ Football Stadiums are positioned, are shown on the map below.

Airport	Number of large carrier domestic flights (Arrive and Depart) Per Week
Johannesburg	304
Cape Town	166
Durban	130
Other ACSA Airports*	395

\* not including privately operated regional airports

Domestic air routes in relation to proposed World Cup™ venues with travel times





### 13.3.3 South Africa's Airports

The Airports Company of South Africa (ACSA) is continually expanding and improving the airport infrastructure to meet "best world" aviation standards and to meet the growing demand as forecasted by the International Air Transport Association (IATA).

Current capacities and further planned upgrades will ensure that the busiest day passenger scenarios during the World Cup period will be managed at a high level of service (see Section 13.4.). South Africa's airports enjoy an unblemished safety record and its air traffic control systems meet the most stringent international operational and safety performance criteria.





**Johannesburg International Airport (JIA)**

Since 1999, JIA has been extensively upgraded, with new access roads, a multi-storey parking garage and hotels. Recent completion of the new domestic terminal has resulted in the largest airport infrastructure development programme to date, with capacity for peak-hourly flow of 2500-2700 passengers.

Development focus will now shift back to the International Terminal. Planned work during the next six years includes:

- ◆ Development of an international pier and a new apron for wide-bodied aircraft;
- ◆ A new central terminal building;
- ◆ Gautrain, a high speed train link to the airport;
- ◆ Construction of high speed taxiway exits and runway holding bays;
- ◆ Continuing upgrades of taxiway systems; and
- ◆ An additional multi-storey parkade.

Planned developments will take overall capacity for the airport to beyond 20 million passengers annually, exceeding planned requirements for the 2010 FIFA World Cup™.

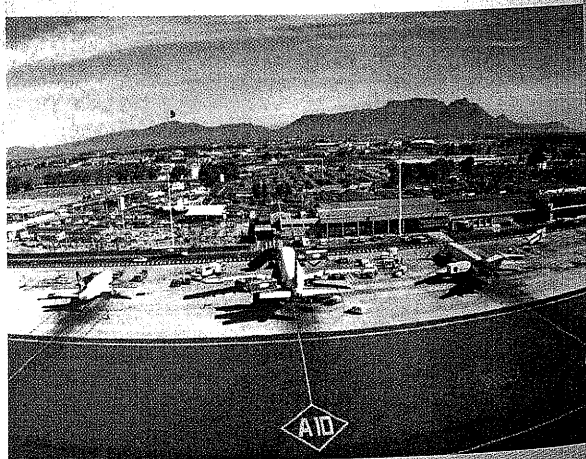
**Cape Town International Airport (CTIA)**

During the last 5 years, both the international arrival and departure terminals have been extensively re-developed, providing sufficient capacity for the medium term. The Domestic terminals are now the focus for development.

Planned work includes:

- ◆ A new domestic terminal, due for completion by 2006, with capacity at a high service level for over 1200 passengers arriving or departing;
- ◆ Increased and improved landside parking;
- ◆ Additional aprons; and
- ◆ Improvements to the taxiway system sufficient to accommodate new generation large aircraft.

All of these developments will guarantee that the peak demands projected for 2010 can be comfortably dealt with, with spare capacity also being available.



**Durban**

An upg  
comple  
vastly  
for an  
new ai  
sions  
term  
accor  
Speci

- ◆ F
- ◆

**Nati**

The  
tion  
refer  
tem

- ◆
- ◆
- ◆
- ◆
- ◆
- ◆



A programme of expansions and upgrades at these airports will satisfy demand projects to the 2010 planning horizon.

### Privately Operated Airports

These include:

- ◆ Lanseria
- ◆ Grand Central
- ◆ Nelspruit /Kruger National Park
- ◆ Polokwane.

These airports will play an important role during 2010 FIFA World Cup™ with most capable of accepting wide body aircraft. The airports have managed increased traffic levels associated with past special events including the 1995 Rugby World Cup, the 1999 All African Games, the 2003 Cricket World Cup, Golf tournaments, conferences and official visits.

During major events the airports are capable of accommodating increased demand through either of the following:

- ◆ Adequate spare capacity being available. The airports were planned and constructed with spare capacity in terms of runways, taxiways, hangars and aprons.
- ◆ Special operational measures: Additional manpower and interim operational procedures.

### Durban International Airport (DIA)

An upgraded, single contiguous terminal complex was completed in 2000. The redevelopment has resulted in vastly improved service levels and capacity, sufficient for anticipated growth up to 2010. The possibility of a new airport for Durban at La Mercy means that expansions at DIA will be limited to accommodate medium term growth only, however facilities will satisfactorily accommodate the 2010 FIFA World Cup™ demands. Specific developments will include:

- ◆ Further landside parking; and
- ◆ Apron re-configuration to increase aircraft parking.

### National Airports

The ACSA airport system comprises of three international plus seven domestic airports. The latter are referred to as the "national airports" within the system and comprise the following:

- ◆ Port Elizabeth
- ◆ East London
- ◆ George
- ◆ Bloemfontein
- ◆ Kimberley
- ◆ Pilanesberg / Sun City
- ◆ Upington



## 13.4 TRANSPORT CONCEPT

### 13.4.1 Key Planning Parameters

The transport plan for the 2010 FIFA World Cup™ is dependent on the number and profile of spectators, the modes of travel they will use and an overall concept for providing efficient and high quality access.

#### Spectator Travel Demand

Spectator demand forecasts are derived from expected ticket sales and the average number of matches each spectator will attend. Spectators at each World Cup game will be either international visitors, regional or local spectators.

The number of expected spectators and visitors for the 2010 FIFA World Cup™ for each grouping is as follows:

#### Spectator Categories

Category of spectator	% of all spectators
International	30% - 40%
Regional >200km from venue	20% - 30%
Local < 200km from venue	30% - 40%

International spectators are expected to take up 30% to 40% of all match tickets and will typically attend a range of matches. Based on recent FIFA World Cup™ tournaments the maximum number of international travellers is expected to be 300,000.

#### Total International Visitors for 2010 World Cup™

	Mid-range estimate
Total Ticket Sales	2,786,000
Tickets to International Spectators (at 40%)	1,107,000
International Spectators (at 5 matches per visitor)	221,000
Projected number of International air travellers to the 2010 FIFA World Cup	280,000

### 13.4.2 Transport Modes for 2010 FIFA WORLD CUP™

#### Air Travel

The expected busiest days at domestic and international airport terminals during the World Cup have been reviewed and indicate that the air travel demand can be comfortably accommodated. In addition to the capacities indicated below, by increasing off-peak flights and operating late night services the totals can be increased significantly.

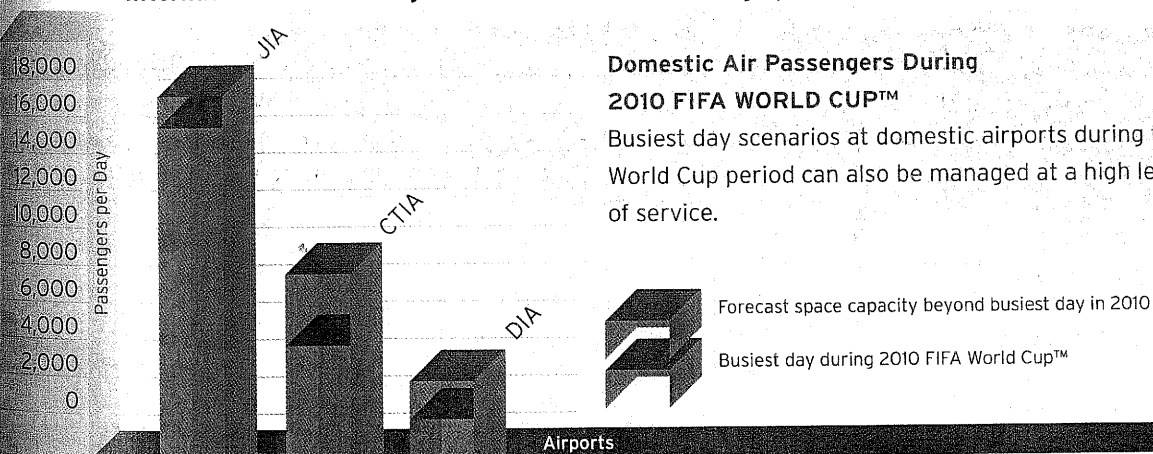
Charter flights and a wide variety of light aircraft can be hired privately supplementing the scheduled flight services.

#### International Air Passengers During 2010 FIFA World Cup™

There will be peak demand in international arrivals during the early stages of the tournament. This will be partly balanced by airline pricing strategies and tour packaging aimed at spreading demand to maintain high levels of service.

International visitors will predominantly arrive at South Africa's three International Gateway Airports. While direct international access from other airports is feasible, planning to ensure high service levels is based on arrivals via JIA, CTIA and DIA only as indicated in the graph below.

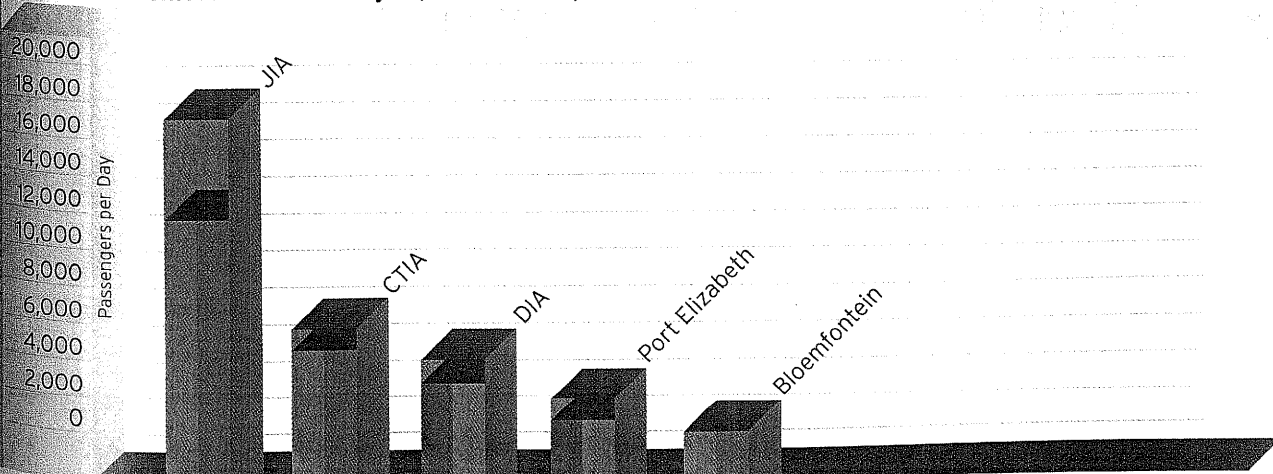
International Air Passengers



#### Domestic Air Passengers During 2010 FIFA WORLD CUP™

Busiest day scenarios at domestic airports during the World Cup period can also be managed at a high level of service.

Domestic Air Passengers, Selected Airports



### 13.4.3 Road Network

#### Road Network within South Africa

The country has a well developed National Road Network, forming the backbone of the land transport system and providing excellent regional accessibility. There are 7,200 km of National Roads supported by over 50,000km of tarred Provincial Roads. In all cases, the National Road network links directly into the city road networks offering fast and efficient travel between all 2010 FIFA World Cup™ venues.

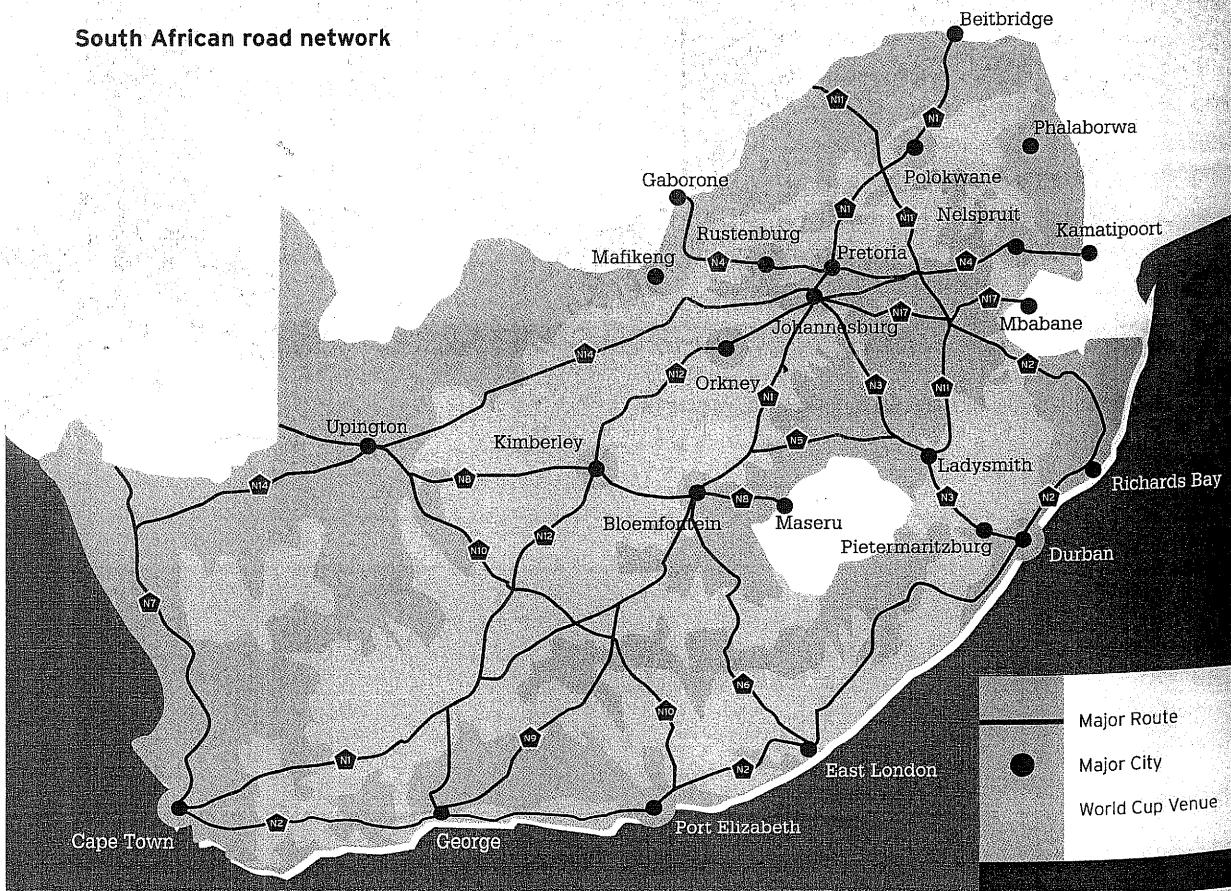
The relatively low volume of traffic travelling on this extensive road network results in considerably more freeway space per vehicle in South Africa than in most other countries.

#### Management of the Road Network

The South African National Roads Agency (SANRAL) was formed to deliver and maintain a world-class primary road network, one of the country's most valuable assets. There are extensive ongoing upgrading plans throughout the network. To successfully manage and finance these projects, SANRAL has developed a number of public-private financed national toll roads.

An Intelligent Transportation System (ITS) laboratory, recently set up by the South African National Roads Agency, has been mandated to coordinate the interactive communication and management of the national road network through variable message signs, monitoring instrumentation, etc. to ensure safer and more effective use of existing infrastructure.

South African road network



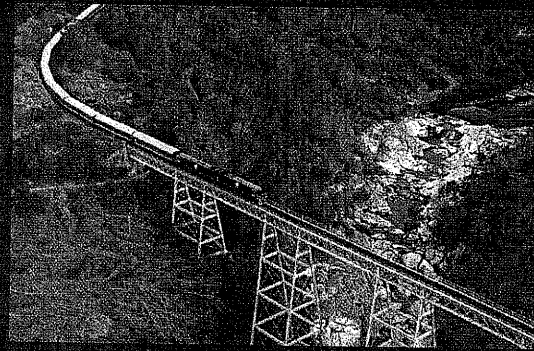


### 13.4.4 Rail Travel

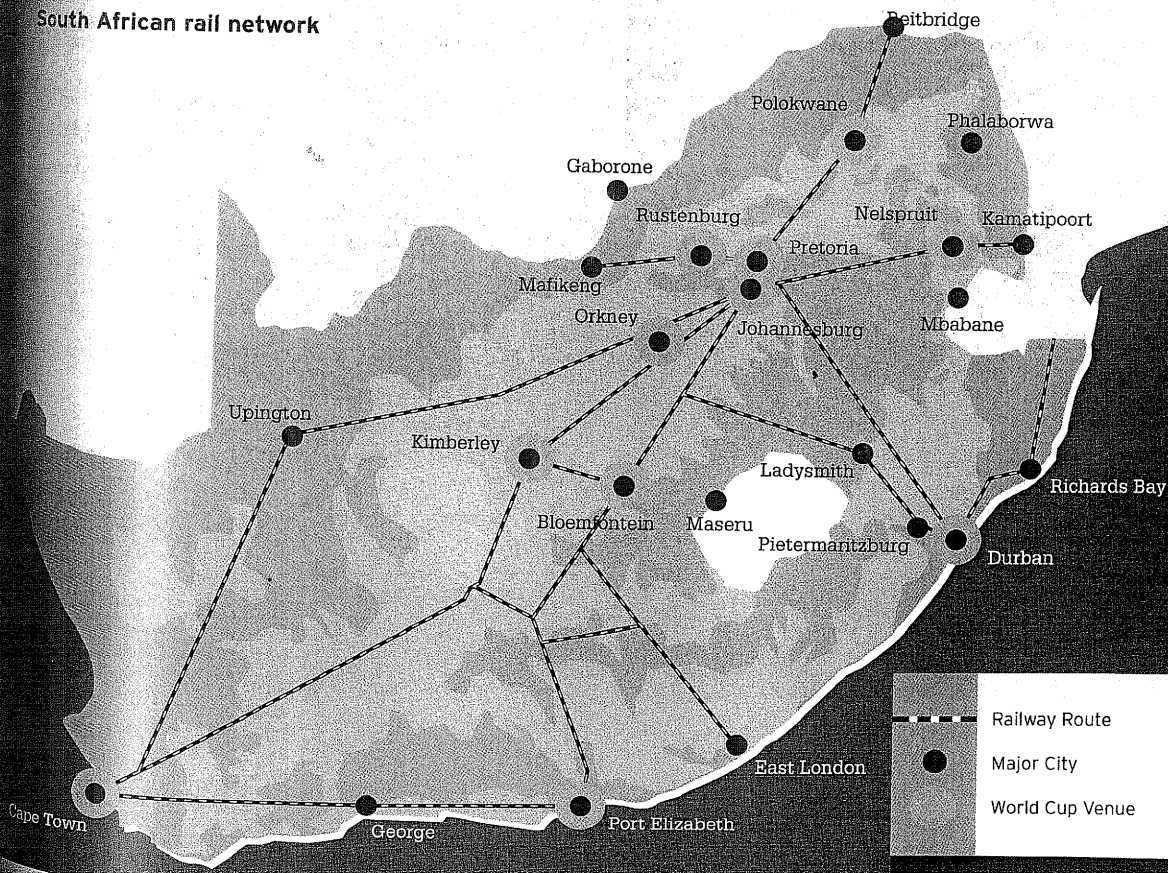
Best use will be made of all local commuter rail services which can provide access to World Cup stadiums in Johannesburg, Pretoria, Cape Town, Durban and Port Elizabeth.

In addition South Africa has an extensive inter-city passenger rail network of over 6,000 kilometres. Rail options include a regular service, the select Premier Class and the very luxurious. Luxury rail travel on the Blue Train and Rovos Rail offers some of the most spectacular and famous rail journeys in the world. These services will be tremendously popular to a number of visitors to the 2010 FIFA World Cup™.

Charter trains will also be available as supplementary services between the key venues during the 2010 FIFA World Cup™.



South African rail network



### 13.4.5 Bus & Coach Travel

Besides local bus services which operate in most of the venues, there are long-distance inter-city bus services and luxury tour buses for hire.

#### Inter-city Buses

All major population centres in South Africa along with cities in neighbouring Southern African countries are connected by regular scheduled inter-city luxury coach services. The demand for these services is growing in excess of 10% per year.

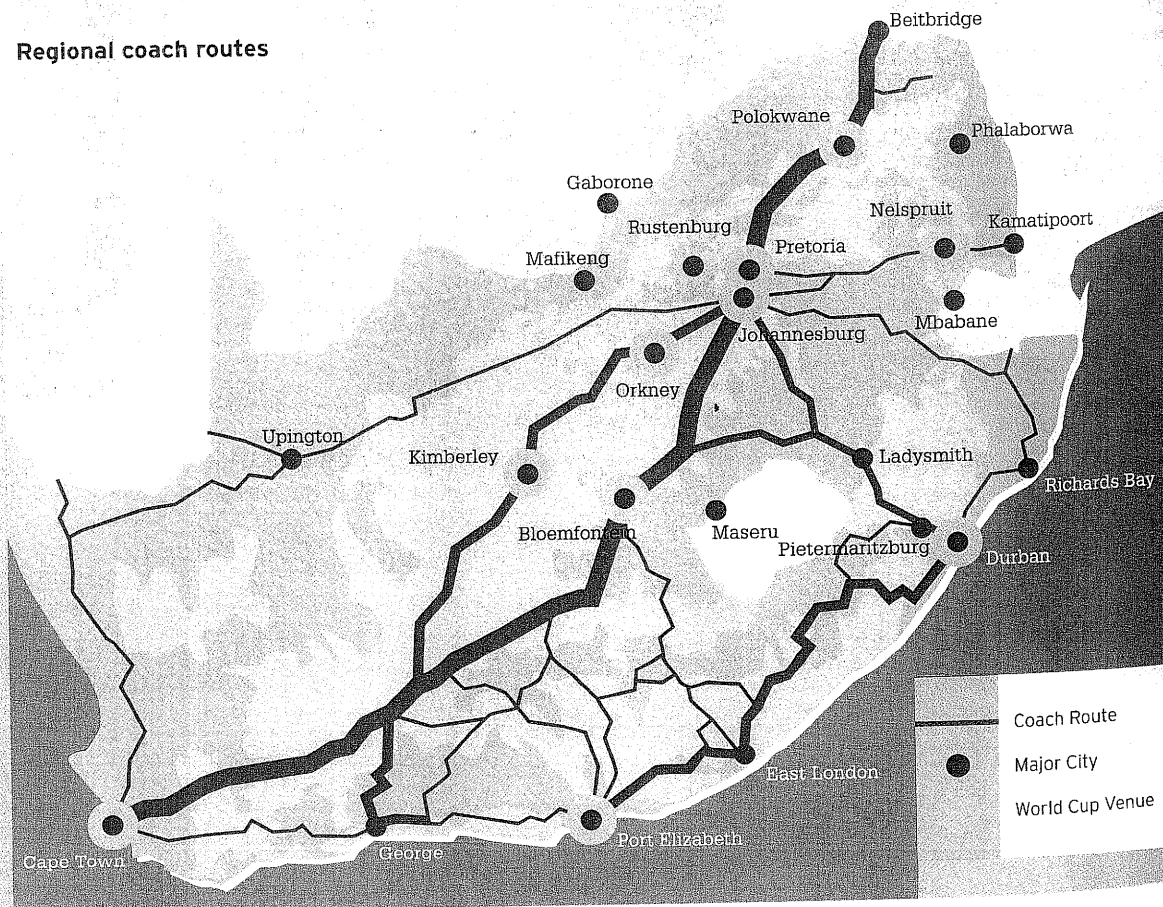
#### Coach Operations

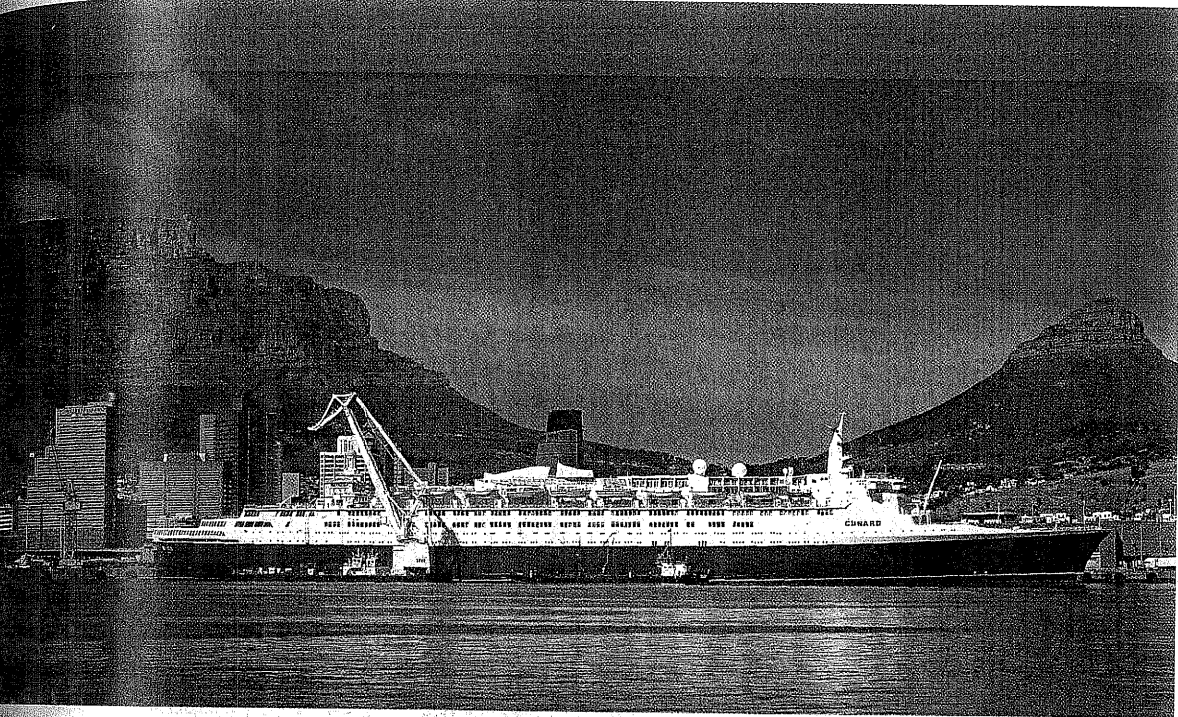
The coach industry renders tour charter services and scheduled inter-city services throughout South Africa and its neighbouring countries.

It is expected that a significant number of visitors to the 2010 FIFA World Cup™ will travel as part of organised tour groups. Travel for these groups will be with luxury and semi-luxury coaches. Most tourist services within South Africa are provided by specialised operators, many of whom own their own luxury coaches.

All the established bus companies are affiliated to the Coach Operators Association (COASA), which has the mandate to maintain world-class standards of operation and safety in this sector. The current fleet size is approximately 240 44-seater luxury vehicles, and 150 60-seater luxury and semi-luxury vehicles

#### Regional coach routes





#### Sea Travel

The Cape of Good Hope is strategically placed on the sea routes linking Europe, South America and the Far East. The three port cities selected to host 2010 FIFA World Cup™ matches, namely Cape Town, Durban and Port Elizabeth, have multi-user berth facilities that accommodate the largest cruise liners currently in operation.

### 13.4.6 Transport Concept Plan: Spectators

World Cup transport plans will focus on making the best use of existing air, road and rail infrastructure, supplemented with additional services to ensure fast and efficient access between venues. Large improvements to the transport system infrastructure beyond what is already planned will not be necessary.

An overview of key concepts for spectator transport is outlined below. The supporting detailed planning has been carried out in the Transport Audit, which includes analysis of movement between key locations in each venue city by each mode of transport.

### Providing a Quality Transport and Tourism Experience

South Africa is a primary tourist destination, delivering quality services in all aspects of travel. The South African tourism industry is growing rapidly. The World Travel and Tourism Council (WTTTC) estimates that South African travel and tourism is now a US\$15b (CHF 39b) industry in terms of total demand, and expects this figure to grow by 4,8% per annum to 2012.

Leisure tourism (including major events tourism, i.e. sporting, cultural, trade and industry) is a major part of this growth trend, with positive effects on the South African transport infrastructure, particularly in terms of capacity and the quality of service delivered.

