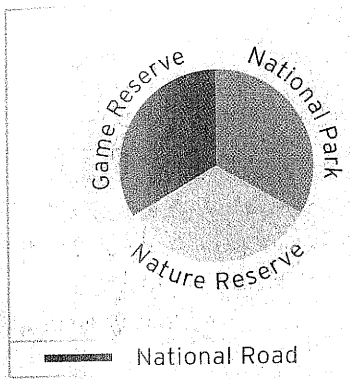


## Stadiums and other Infrastructure Kimberley



**SPRINGBOK:** Nimble and graceful, the sight of springbok leaping swiftly through the bush sets any South African heart racing; and this may explain the buck's tradition as a national symbol.

### NATURE RESERVES IN THE KIMBERLEY AREA



The 2010 FIFA World Cup™ will bring a brand new, long overdue top class sports stadium to the diamond city of Kimberley.

The new Stadium will entirely replace an existing venue used for football and athletics and will become a symbol of pride for the often deprived communities of the Northern Cape.

Cast as a fully functioning international football venue to host first and second round games during the 2010 FIFA World Cup™, the Stadium will be designed to continue thereafter as a fully adaptable, multi-sports, entertainment and exhibition venue.

SAFA is determined that a 2010 FIFA World Cup™ held in South Africa will leave a legacy of relevant, first rate facilities.

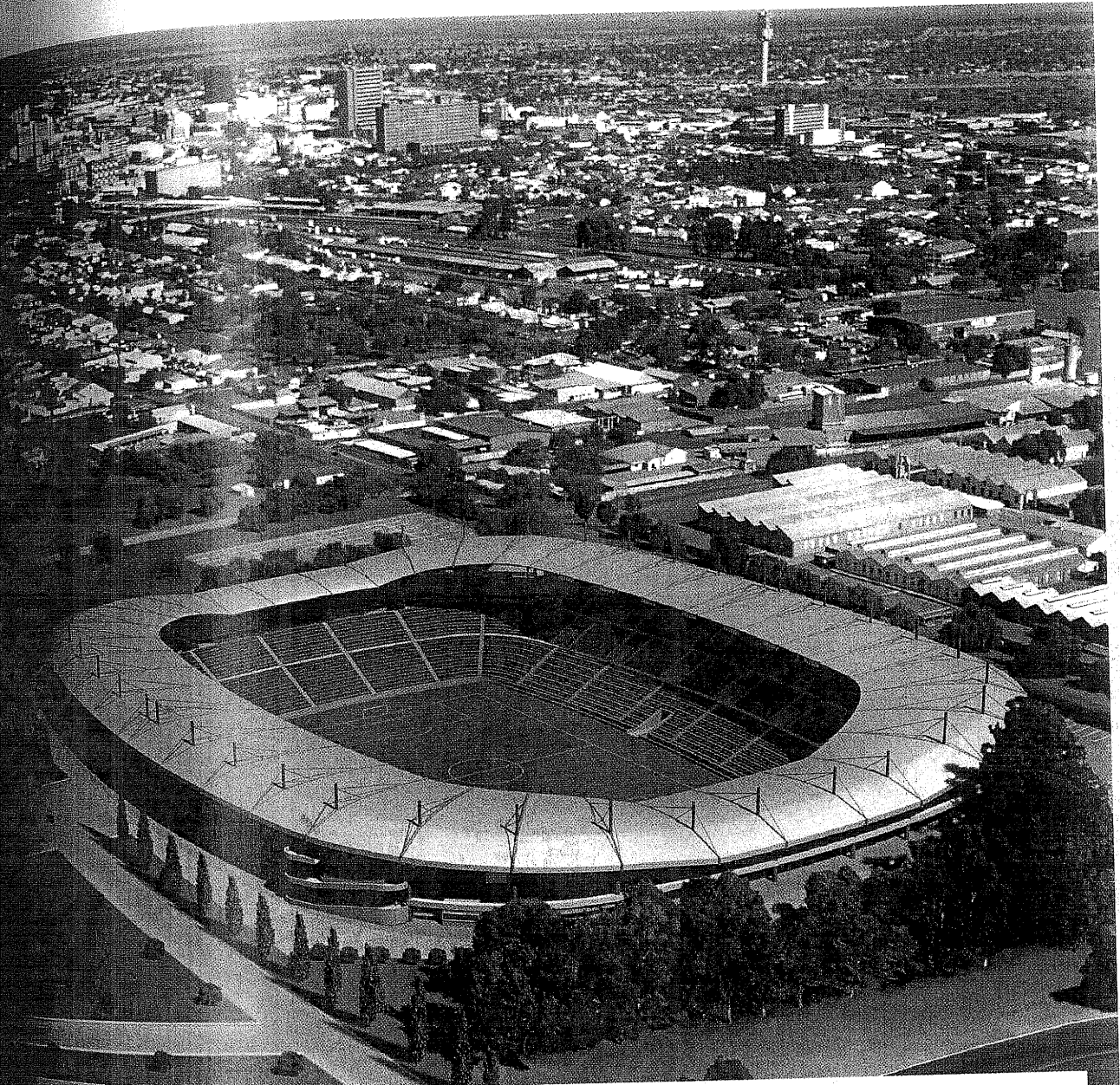
The site has been selected because of its potentially excellent transport links. A disused siding will be transformed into the specific stadium railway station and a new off-ramp from the N12 highway will be constructed just north of the stadium precinct.

In terms of the Stadium's specifications, it will be constructed to meet each and every FIFA Requirement.

Not since the famous diamond rush in 1866 will such intense global attention have been fixed on Kimberley and this outstanding and inspiring structure will certainly glitter in the spotlight.

# 10

## Stadiums and other Infrastructure Kimberley



Capacity (excluding VIPs and Media): 40,000

Scheduled date of completion: May 2007

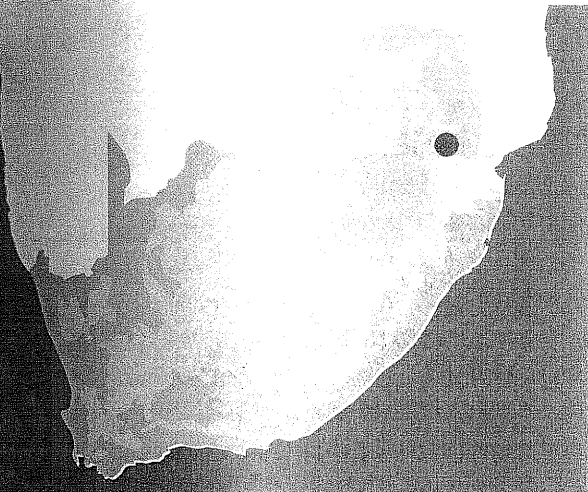
Distance from City Centre: 5 km



# Nelspruit



## Swims and other infrastructure Nelspruit



Population  
474,000

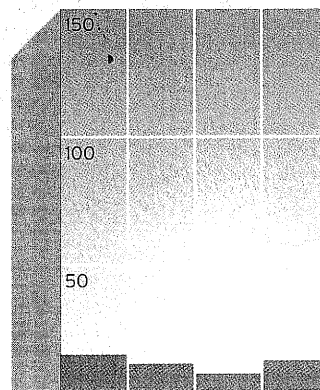
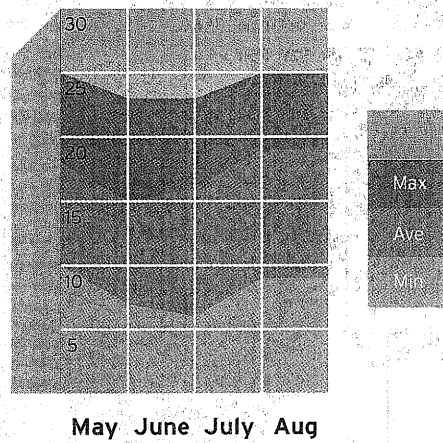
Area  
34

Altitude  
660 metres

Hotels  
Self-catering

	Number	Rooms	Beds
Total	145	2,228	6,731

Average daily temperature  
in degree Celsius  
(30 year period)



Average monthly rainfall  
in mm  
(30 year period)

## CITY PROFILE

For many years, Nelspruit was known as a far-flung north-eastern outpost of South Africa, offering not much more than easy access for visitors to the world-famous Kruger National Park. In those days, it was a frontier town. Times have changed.

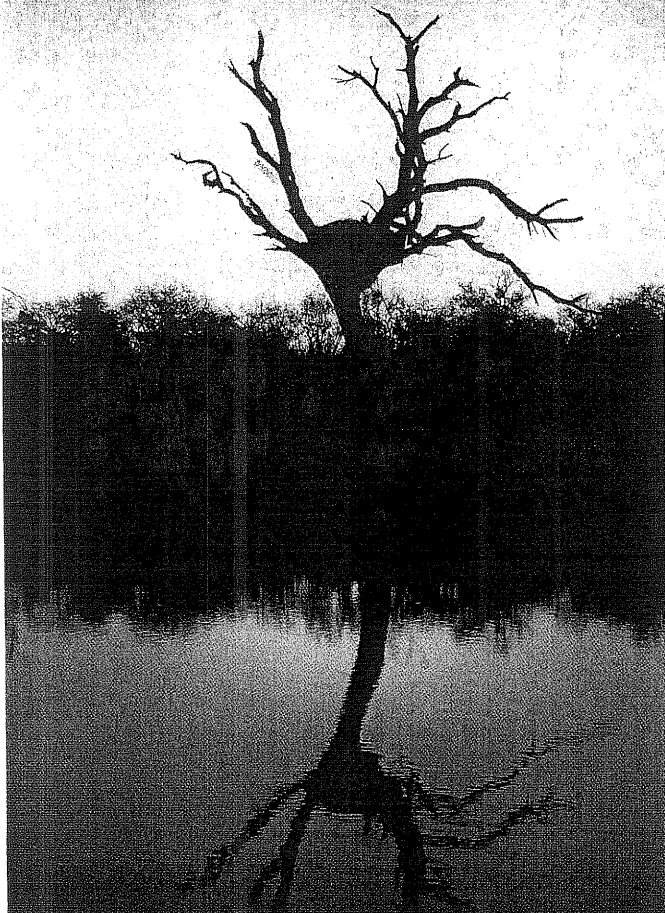
Political change and economic development of the N4 Maputo Corridor have transformed the city into a gateway for neighbouring markets, a business centre and a provincial capital.

The town was essentially created on 28 August 1884, when the Republican Volksraad approved plans to build a railway from the newly discovered Lowveld

goldfields to Johannesburg. The line was finally opened in 1895 and growth followed as people quickly rushed to buy land in and around the Nelspruit area.

Today, property prices are soaring again. The city's economy obviously benefits from its proximity to Mozambique and Swaziland, but tourism has also been identified as a growth area.

Nelspruit offers easy access to many of the world's finest game parks and is close to the Eastern Escarpment, a 1,200-metre wall of jagged mountain towering above the African bush. The city is also home to the National Botanical Gardens, set in 154 hectares



## SPORTING HERITAGE

The Dangerous Stars football club has recently won promotion to South Africa's Premier League and will fly the Nelspruit banner in circles where it has not always been prominent.

Indeed, the city's existing sporting facilities are modest, even if the Nelspruit rugby Stadium and the football, hockey and cricket stadiums at the Valencia club have served their purpose.

Now, plans are well advanced to construct a multi-purpose sports complex, incorporating a 40,000-seater Stadium, an academy of sport and an event and exhibition centre.

As in other fields, it seems as though Nelspruit's best sporting days lie ahead.

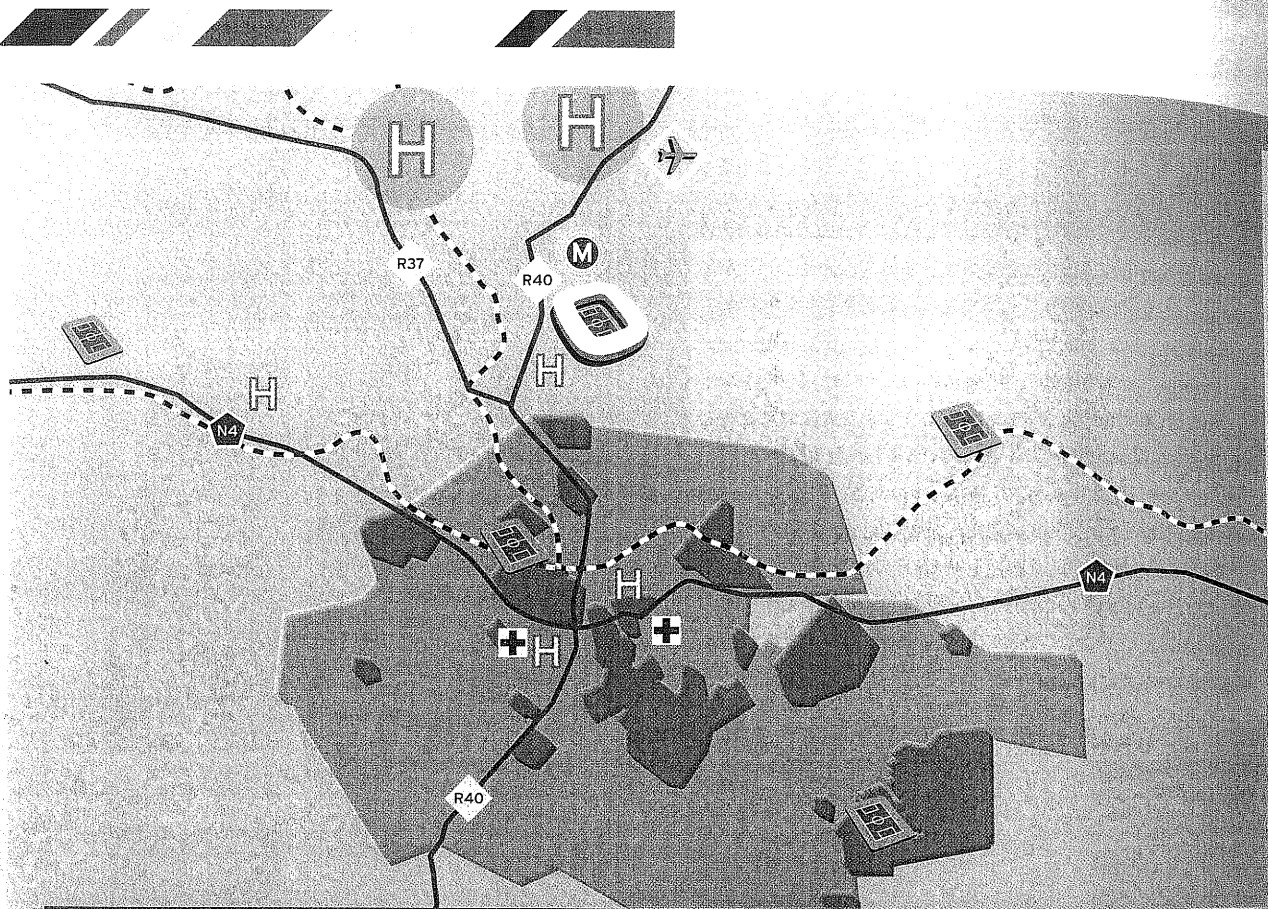
of land along the eastern bank of the Crocodile River, containing no fewer than 512 plant species indigenous to the area.

Indeed, spurred by an ambitious local municipality, Nelspruit has stepped forward as a prospective host venue for a 2010 FIFA World Cup™, offering to build a new stadium and, significantly, giving easy access to the event from Mozambique and Swaziland.



### INFRASTRUCTURE

Match Venues	Mbombela Stadium
Training Venues	Valencia Stadium, Kanyamazane Stadium, Kwa-Guga Stadium, Matsulu Stadium, Kwanazema Stadium, Ackerville Stadium
Government	Province Mpumalanga Local Mbombela Local Municipality
Industry	Mining, fruit (mangoes, avocados, litchis, bananas, paw-paws and guavas), tourism.
Local Media	Newspapers Lowveld Advertiser Radio Radio Lowveld
Tourist centres	The world famous Kruger National Park is nearby, with a host of lodges and small hotels settled in the Lowveld, an area of great natural beauty.
Hospitals	Three state hospitals, including the Themba and the Rob Ferreira, plus three private clinics.
Universities	Lowveld agricultural college, satellite campus of the Pretoria Technikon, Nelspruit technical college



Stadium



Hotel Cluster



Airport



Training Venues



Hotel



Main Hospital



IBC/Media centre



Station



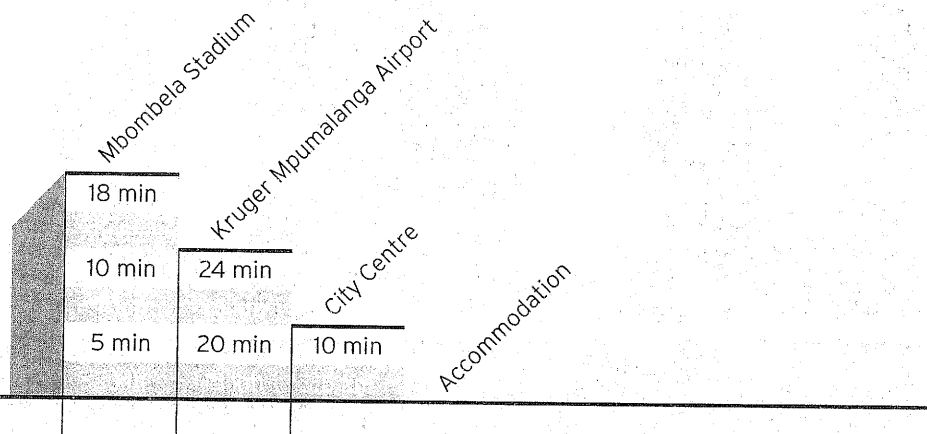
Railway



Highway



### DRIVE TIME



### TRANSPORTATION

#### AIR

The Kruger Mpumalanga Airport was opened in October 2002 and granted international status in May 2003. Nelspruit airport is still used for smaller domestic charter flights.

#### TRAIN

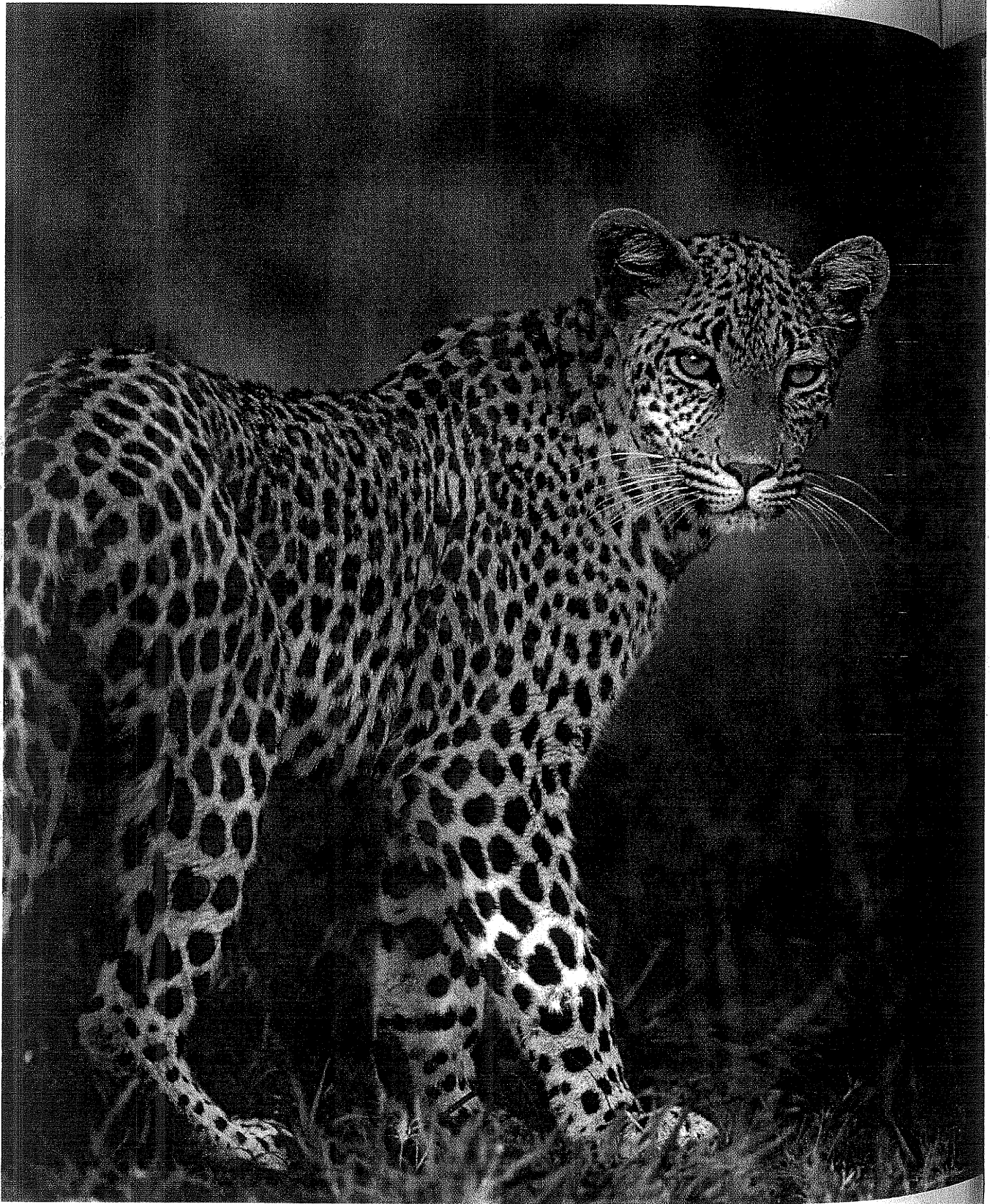
The city stands on the main rail line between Johannesburg and Maputo, and also offers regular rail services to Swaziland and Richards Bay.

#### BUS

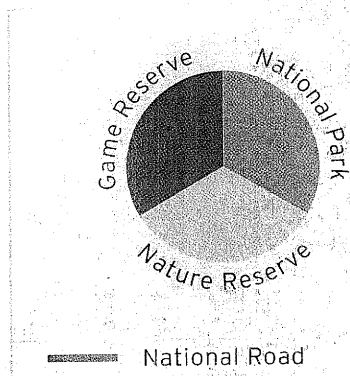
More than 270 buses serve the city, both on short haul routes within the region and long haul journeys to cities nationwide.

#### CAR

Situated on the N4 highway, Nelspruit is only 200 kilometres from the Mozambique coast.

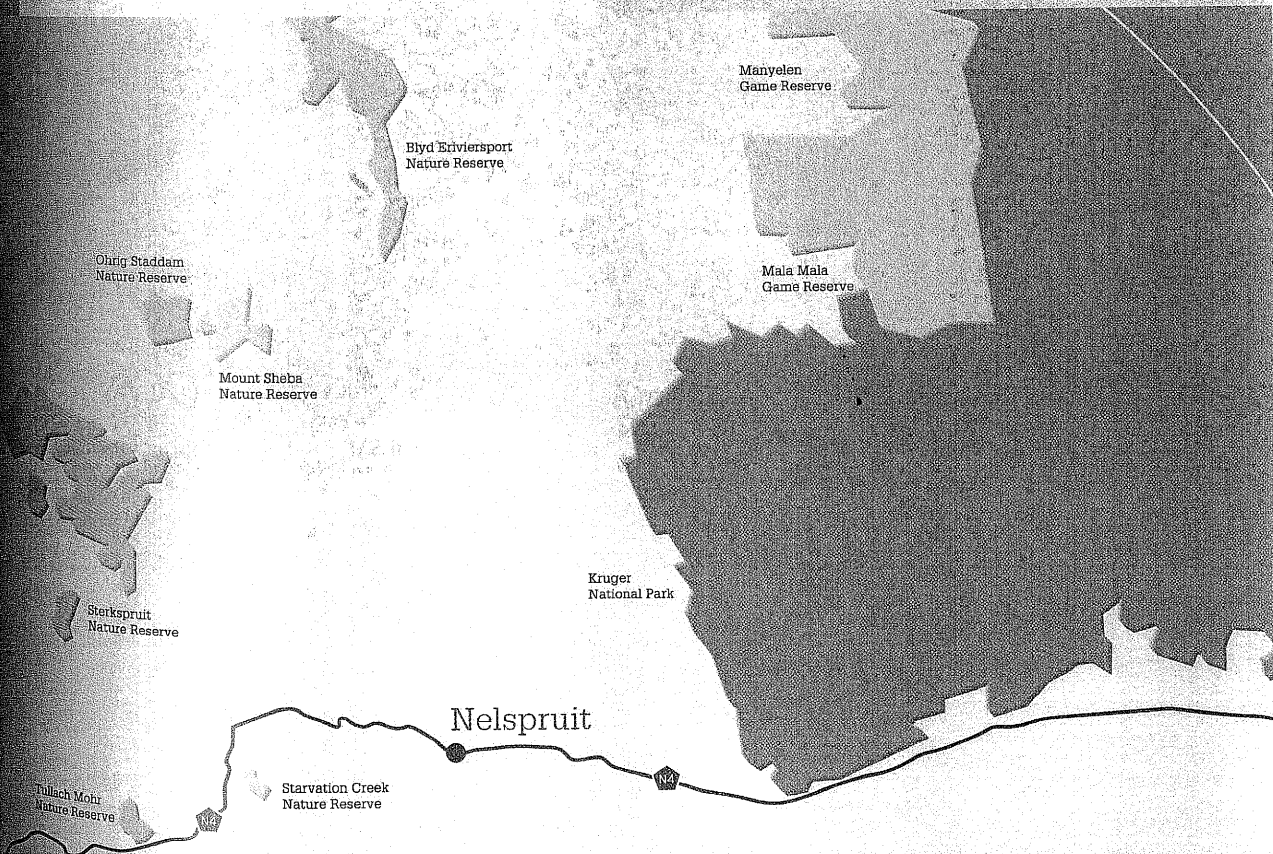


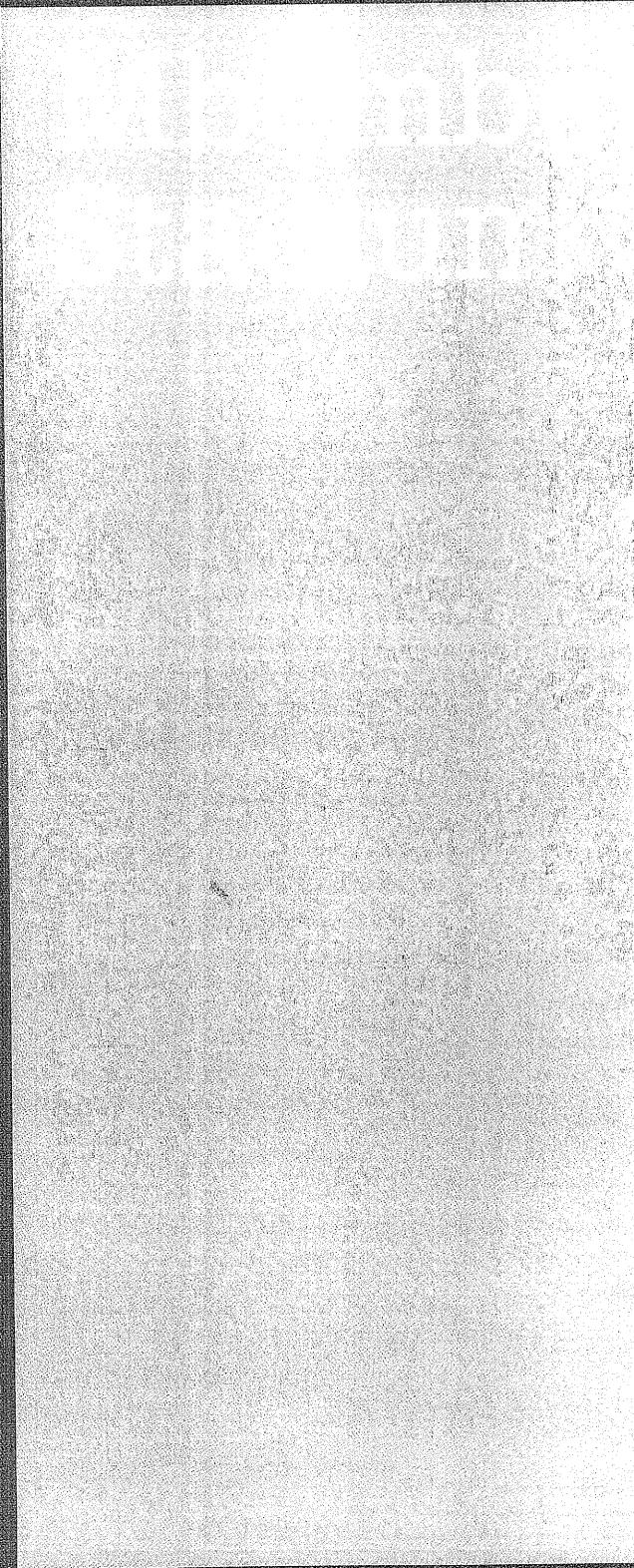
## Stadiums and other Infrastructure Nelspruit



**LEOPARD:** Beautiful, clever, adaptable and lethal, the leopard hunts at night and generally secures his prey. It comes as no surprise that leopards remain one of the most widespread of all Africa's cats.

### WILDLIFE RESERVES IN THE NELSPRUIT AREA





Construction of the new Mbombela Stadium on open land just eight kilometres north of Nelspruit will confirm the recently rising fortunes of this far north-eastern corner of South Africa.

Local communities have been denied such a facility for far too long and this Stadium will correct the anomaly.

Again, the 2010 FIFA World Cup™ will have provided the crucial impetus in the creation of a world class facility that will significantly improve the quality of life for millions of South Africans.

The Mbombela Stadium has been designed to ensure it enjoys a prosperous life beyond the tournament as an adaptable, relevant multi-sport, entertainment and exhibition venue.

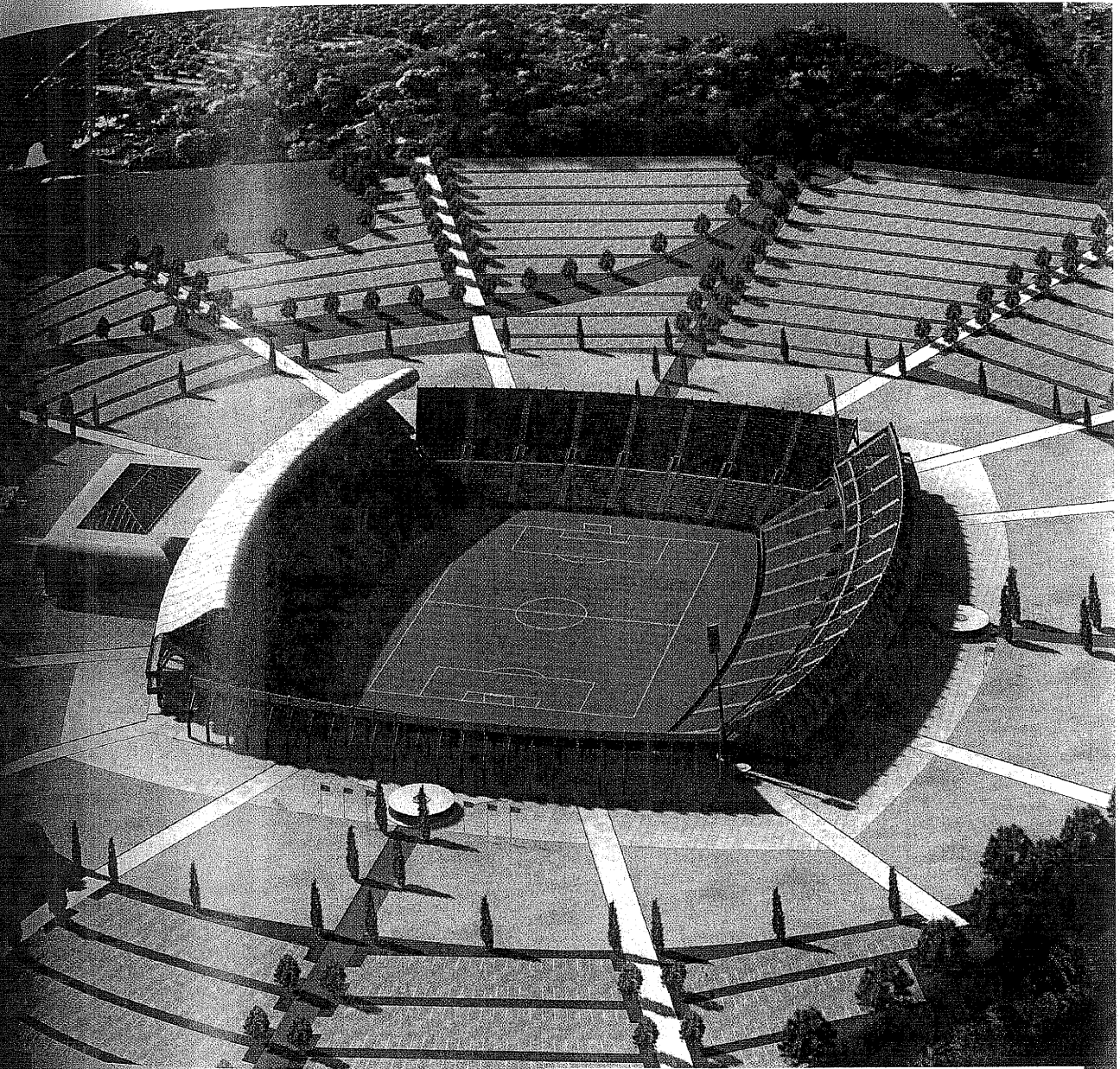
An elevated site has been chosen for the rounded, rectangular shaped structure, incorporating ideal sight lines from every seat and a substantial administrative area on the western side.

The Stadium will be specifically constructed to ensure that it meets all FIFA Requirements and presents a compact and attractive venue for both first and second round matches.

Visiting teams and supporters may well be impressed by their safari drives in the nearby Kruger Park but, for explosive noise and thrilling atmosphere, even the Big Five would be stretched to outdo the FIFA World Cup™ spectacle at Mbombela Stadium.

# 10

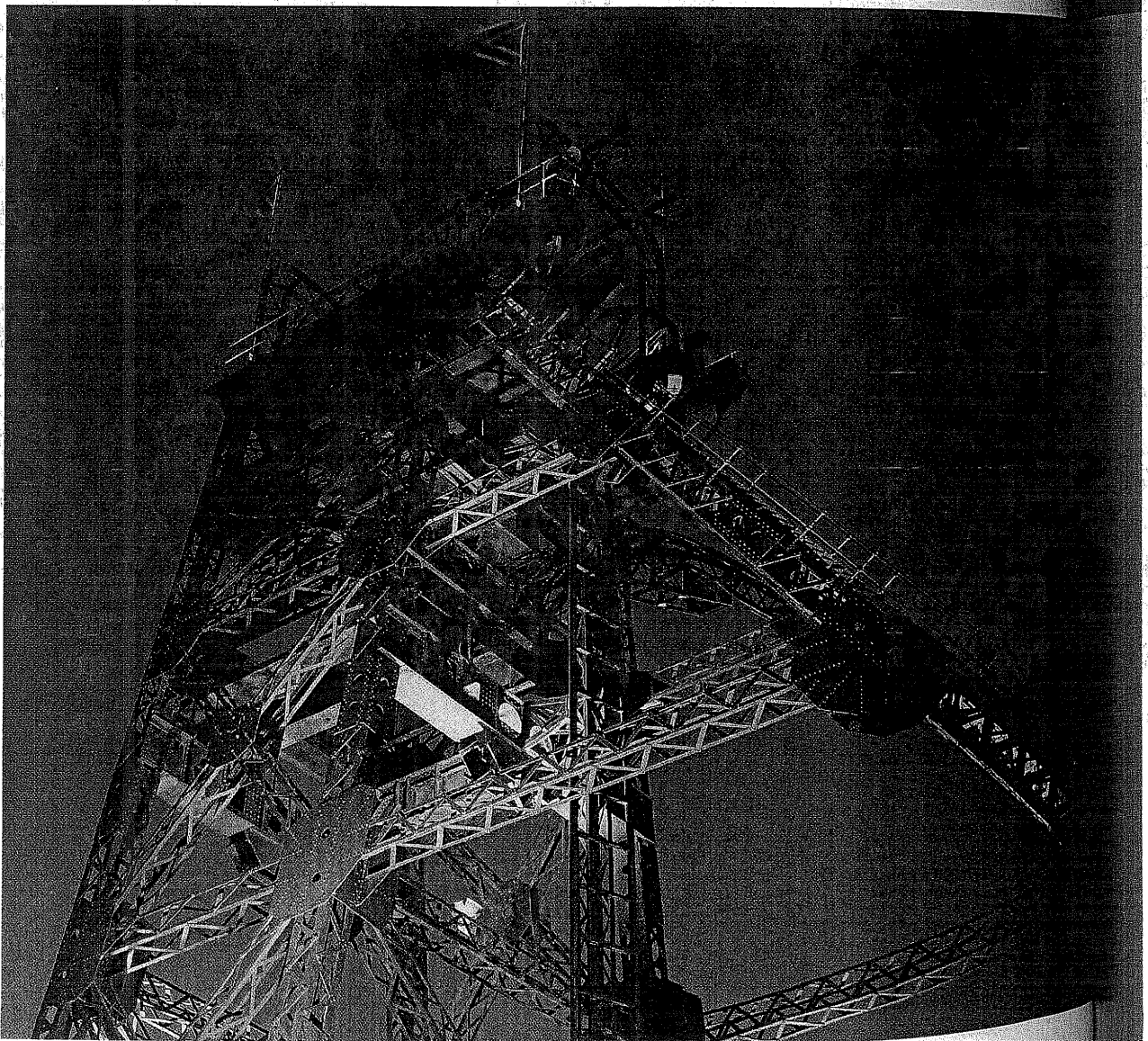
## Stadiums and other Infrastructure Nelspruit



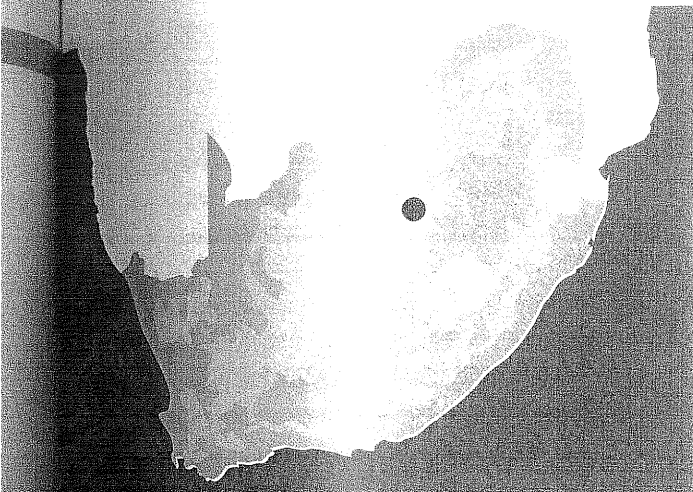
Capacity (excluding VIPs and Media): 40,000  
Scheduled date of completion: June 2007  
Distance from City Centre: 7 km



# Orkney



## Stadiums and other Infrastructure Orkney



Population of Orkney, Shetland, the Hebrides and the Islands of the Firth of Clyde  
497,000

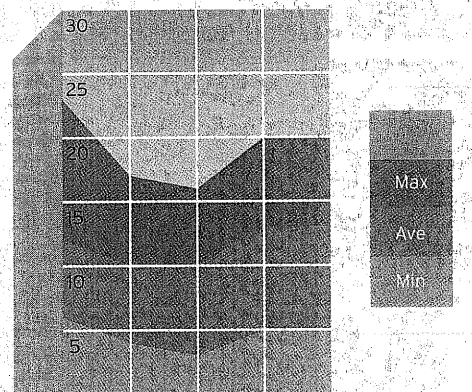
Area of Orkney  
712

Altitude of Orkney  
1,285 metres

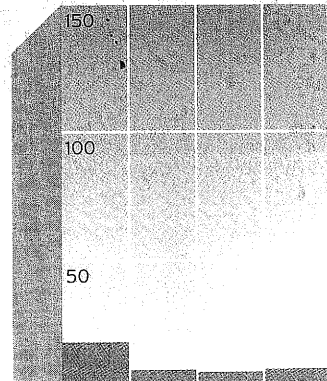
Number of Clubs, Venues, Seats, and Venues

	Number	Rooms	Beds
Total	186	1,212	3,856

Average daily temperature in degree Celsius (30 year period)



May June July Aug



Average monthly rainfall in mm (30 year period)

## CITY PROFILE

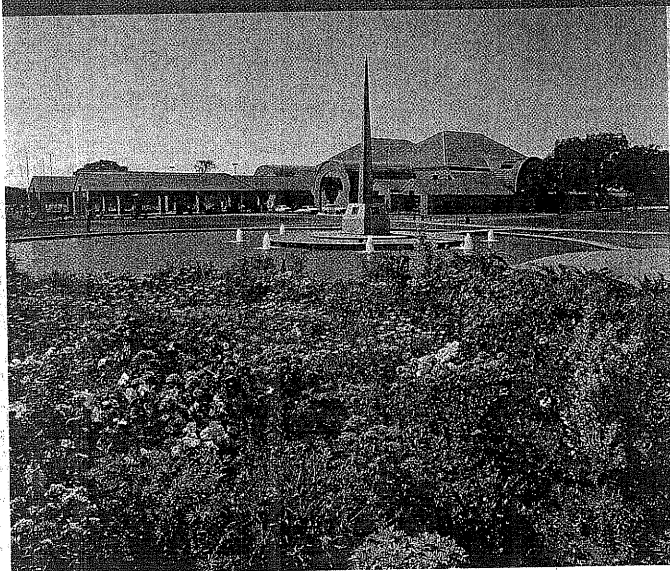
It is a world of raw economic power, of industry and power, of deep mines and farms that stretch over the horizon: this is the southern region of the North-West Province, not much more than an hour's drive from Johannesburg, a landscape that has yielded the neighbouring provincial towns of Klerksdorp and Potchefstroom.

In this centrally located area of the country, plans have been laid to upgrade the Oppenheimer Stadium at Orkney and create an exceptional, fully equipped world-class venue.

The area has many benefits: a low crime rate, an equitable climate and a general sense of calm and well being.

Life has never been easy in one of the country's 'engine room' regions, but the people have historically not shirked from their hard work, whether it be deep down in the gold mines at Klerksdorp and Orkney, or in the wide acres of maize and sunflowers.

Hardship has bred spirit and solidarity, a sense of belonging to the area and its people that serves the region well.



## SPORTING HERITAGE

The Potchefstroom-Klerksdorp-Orkney region is recognised around the world as an ideal high-altitude site for peak performance and is a preferred training base for many world-class athletes in search of warmth during the northern hemisphere winter.

Various stadiums, indoor sports centres and golf courses meet the needs of local people, who have traditionally proven themselves eager both to play the game, and support major events.

The Olen Park Stadium, in Potchefstroom, represents the main centre of activity and the North West Cricket Stadium recently won national recognition as the 'Ground of the Year' in 2001/2.





# 10

## Stadiums and other Infrastructure Orkney

Fate may have given the people of Klerksdorp, Potchefstroom and Orkney nothing for free, but they have worked hard to create a region that will offer warm hospitality and excellent facilities to each and every visitor during a 2010 FIFA World Cup™ in South Africa.



Lay

### INFRASTRUCTURE

Oppenheimer Stadium, Orkney

Olen Park, Potchefstroom, Klerksdorp Stadium, Alabama Stadium, Matlosane Stadium, Ikageng Stadium, James Motlasi Stadium

**Province** North West Province  
**Local** Klerksdorp Local Municipality  
Potchefstroom Local Municipality

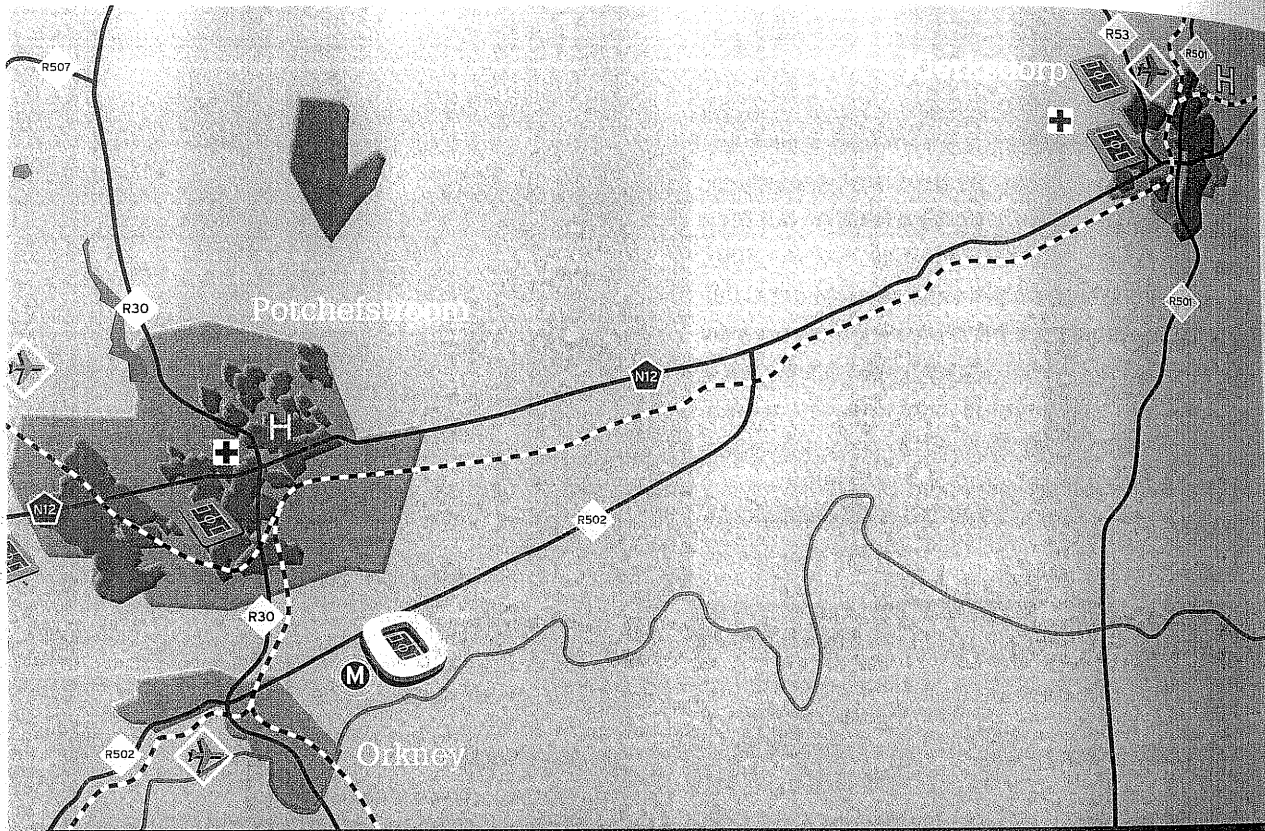
Mining, fabricated metals, agriculture











**Newspapers** Klerksdorp Gazette  
**Radio** Motsweding, Umhlobo Wenene

Vaal River, bushman caves, various nature reserves, historic battlefields

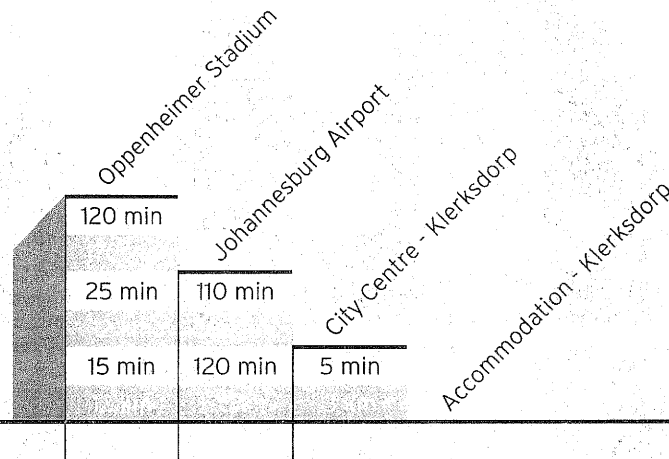
Five state hospitals, three private hospitals and six other medical clinics

University of Potchefstroom, eight other institutions of tertiary education



- |   |               |   |                 |   |                  |
|---|---------------|---|-----------------|---|------------------|
|  | Stadium       |  | Training Venues |  | IBC/Media centre |
|  | Hotel Cluster |  | Hotel           |  | Station          |
|  | Airport       |  | Main Hospital   |  | Railway          |
|   |               |   |                 |  | Highway          |

### DRIVE TIME



### TRANSPORTATION

#### AIR

Johannesburg International Airport is just a 110-minute drive from this region and the region is served by three local airports.

#### TRAIN

The region stands on the main rail line between Johannesburg and Cape Town.

#### BUS

Local bus services connect a network of small towns and surrounding rural areas.

#### CAR

A comprehensive road network is regularly maintained and often upgraded and the N12 provides a major highway spine.